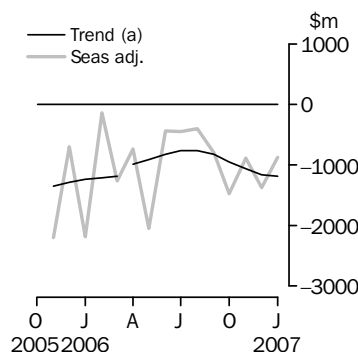


INTERNATIONAL TRADE IN GOODS AND SERVICES

AUSTRALIA

EMBARGO: 11.30AM (CANBERRA TIME) TUES 6 MAR 2007

Balance on goods and services



(a) A trend break of \$150m to April 2006 has been applied.

KEY FIGURES

| | November 2006 \$m | December 2006 \$m | January 2007 \$m | Dec 06 to Jan 07 % change |
|---------------------------------------|-------------------------|-------------------------|------------------------|---------------------------------|
| TREND | | | | |
| Balance on goods and services | -1 062 | -1 157 | -1 192 | .. |
| Credits (exports of goods & services) | 17 874 | 17 898 | 17 967 | — |
| Debits (imports of goods & services) | 18 936 | 19 055 | 19 160 | 1 |
| SEASONALLY ADJUSTED | | | | |
| Balance on goods and services | -889 | -1 379 | -876 | .. |
| Credits (exports of goods & services) | 17 915 | 17 773 | 18 119 | 2 |
| Debits (imports of goods & services) | 18 804 | 19 151 | 18 995 | -1 |

... not applicable

— nil or rounded to zero (including null cells)

KEY POINTS

TREND ESTIMATES

- The provisional trend estimate of the balance on goods and services was a deficit of \$1,192m in January 2007, an increase of \$35m on the revised deficit in December 2006.
- Goods and services credits rose \$69m to \$17,967m. Goods and services debits rose \$105m (1%) to \$19,160m.

SEASONALLY ADJUSTED ESTIMATES

- In seasonally adjusted terms, the balance on goods and services was a deficit of \$876m in January 2007, a decrease of \$503m on the revised deficit in December 2006.
- Goods and services credits rose \$346m (2%) to \$18,119m. Non-rural and other goods rose \$331m (3%) while rural goods fell \$28m (1%). Services credits rose \$44m (1%).
- Goods and services debits fell \$156m (1%) to \$18,995m. Capital goods fell \$121m (3%), intermediate and other goods fell \$67m (1%) while consumption goods rose \$10m. Services debits rose \$21m (1%).

ORIGINAL ESTIMATES

- In original terms, the January 2007 balance on goods and services was a deficit of \$2,115m, an increase of \$2,015m on the deficit in December 2006. Goods and services credits fell \$1,990m (11%) while goods and services debits rose \$25m.
- In the seven months to January, exports of non-rural and other goods were up \$12.4b (17%) and rural goods were up \$0.7b (5%) on the corresponding period in 2005–06.

INQUIRIES

For further information about these and related statistics, contact the National Information and Referral Service on 1300 135 070 or Tom Jebbink on Canberra (02) 6252 5540.

NOTES

FORTHCOMING ISSUES

| ISSUE | RELEASE DATE |
|---------------|----------------|
| February 2007 | 3 April 2007 |
| March 2007 | 4 May 2007 |
| April 2007 | 31 May 2007 |
| May 2007 | 4 July 2007 |
| June 2007 | 1 August 2007 |
| July 2007 | 31 August 2007 |

.....

REVISIONS

Revisions were made to the merchandise trade series to incorporate the latest available data. There were no revisions to the balance of payments series.

CHANGES TO THIS ISSUE

The format of the datacube containing forward seasonal adjustment factors (table 90 Monthly forward seasonal adjustment factors) for this publication is to be changed to align with the current standard of excel spreadsheets (i.e. in .xls format). The new format will be available as table 91 and both tables 90 and 91 will be available for the January and February 2007 issues of 5368.0 with table 90 being withdrawn from the March 2007 issue.

CHANGES TO EXPORT AND IMPORT STATISTICAL CODES

As advised in previous issues, the implementation of an update to the international Harmonized Commodity Description and Coding System (HS) from January 2007 has resulted in revisions to statistical codes in the Australian Harmonized Export Commodity Classification (AHECC) and the Customs Tariff. Clients using detailed merchandise trade data will need to take these changes into consideration. Most of the data published are on an "as reported to Customs" basis as the ABS does not have the resources to check all import and export entries. While there have been some reporting issues identified, the ABS has found no evidence of a significant deterioration in the overall quality of reporting under the updated HS.

The HS changes could also impact on statistics presented according to related classifications. No significant impacts could be identified in series presented according to BOPBEC. However, it is not possible to be definitive about the impact on other series (such as SITC) because of the normal volatility in the series and the limitations of the available data.

Included with the *Information Paper: Changes on 1 January 2007 to Statistical Codes in the AHECC and the Customs Tariff, 2007* (cat. no. 1233.0.55.001) are correspondences between the codes of the current and the updated version of the AHECC and Customs Tariff, and correspondences between the updated version of these classifications and related classifications. The correspondences can be used by clients to assess the impact on the detailed statistics.

Brian Pink
Australian Statistician

CONTENTS

page

| | |
|----------------------------|---|
| Time series data | 4 |
|----------------------------|---|

ANALYSIS

| | |
|---------------------------------|---|
| Analysis and comments | 5 |
|---------------------------------|---|

TABLES

INTERNATIONAL TRADE IN GOODS AND SERVICES – BALANCE OF PAYMENTS BASIS

| | |
|---|----|
| 1 Goods and services, summary, seasonally adjusted and trend estimates | 9 |
| 2 Goods and services, summary, original | 10 |
| 3 Goods credits, original | 11 |
| 4 Goods debits, original | 12 |
| 5 Goods credits, seasonally adjusted | 13 |
| 6 Goods debits, seasonally adjusted | 14 |
| 7 Goods credits, trend estimates | 15 |
| 8 Goods debits, trend estimates | 16 |
| 9 Services, summary, original | 17 |
| 10 Services, summary, seasonally adjusted and trend estimates | 18 |
| 11 Services, original, quarterly | 19 |

INTERNATIONAL MERCHANDISE TRADE – RECORDED TRADE BASIS

| | |
|--|----|
| 12 International merchandise exports, by commodity | 20 |
| 13 International merchandise imports, by commodity | 23 |
| 14 International merchandise trade, by country and country groups | 26 |
| 15 International merchandise trade, by state | 27 |

OTHER TABLES

| | |
|---|----|
| 16 Period average exchange rates per Australian dollar | 28 |
|---|----|

OTHER INFORMATION

| | |
|---------------------------------------|----|
| Explanatory Notes | 29 |
| Abbreviations | 32 |
| Appendix - Related articles | 33 |

TIME SERIES DATA

TIME SERIES DATA

Data available free on the ABS web site <<http://www.abs.gov.au>> include longer time series of tables in this publication and additional spreadsheets and data cubes below:

31 Merchandise exports by Broad Economic Category (BEC)

32 Merchandise exports by industry of origin (ANZSIC)

33 Merchandise imports by Broad Economic Category (BEC)

34 Merchandise imports by Balance of Payments Broad Economic Category (BoPBEC)

35 Merchandise imports by industry of origin (ANZSIC)

36 Merchandise exports, state by country and country groups

37 Merchandise imports, state by country and country groups

90 Monthly forward seasonal adjustment factors

91 Monthly forward seasonal adjustment factors (in .xls format)

Trade in Services data cubes are usually updated on an annual basis - with the March issue of 5368.0 for calendar year and with the September issue for financial year.

Financial year (cat. no. 5368.0.55.003)

1 International trade in services, credits, state by financial year

2 International trade in services, credits, financial year by state

3 International trade in services, debits, state by financial year

4 International trade in services, debits, financial year by state

5 International trade in services, credits, financial year by country and service

6 International trade in services, credits, service by financial year and by country

7 International trade in services, debits, financial year by country and service

8 International trade in services, debits, service by financial year and by country

9 International trade in services, financial year by detailed service

Calendar year (cat. no. 5368.0.55.004)

1 International trade in services, credits, state by calendar year

2 International trade in services, credits, calendar year by state

3 International trade in services, debits, state by calendar year

4 International trade in services, debits, calendar year by state

5 International trade in services, credits, calendar year by country and service

6 International trade in services, credits, service by calendar year and by country

7 International trade in services, debits, calendar year by country and service

8 International trade in services, debits, service by calendar year and by country

9 International trade in services, calendar year by detailed service

ANALYSIS AND COMMENTS

BALANCE ON GOODS AND SERVICES

The trend estimate of the balance on goods and services in January 2007 was a deficit of \$1,192m, an increase of \$35m on the deficit in December 2006.

In seasonally adjusted terms, the balance on goods and services in January 2007 was a deficit of \$876m, a decrease of \$503m on the deficit in December.

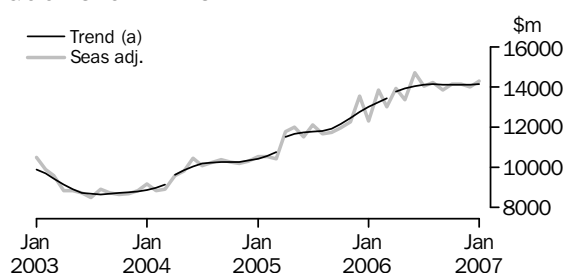
EXPORTS OF GOODS AND SERVICES

The trend estimate of goods and services credits rose \$69m between December 2006 and January 2007 to \$17,967m.

In seasonally adjusted terms, goods and services credits rose \$346m (2%) to \$18,119m. Non-rural goods rose \$378m (3%) while other goods fell \$47m (5%) and rural goods fell \$28m (1%). Services credits rose \$44m (1%).

Exports of goods

GOODS CREDITS



(a) Trend breaks of \$300m to April 2004, \$600m to April 2005 and \$150m to April 2006 have been applied.

RURAL GOODS

The trend estimate of rural goods exports fell \$28m (1%) to \$2,132m.

In seasonally adjusted terms, exports of rural goods fell \$28m (1%) to \$2,094m.

The components contributing to the fall in the seasonally adjusted estimates were:

- cereal grains and cereal preparations, down \$45m (14%)
- other rural, down \$21m (2%).

Partly offsetting these effects were:

- wool and sheepskins, up \$19m (8%)
- meat and meat preparations, up \$18m (3%).

In original terms, exports of rural goods fell \$541m (24%) to \$1,687m.

NON-RURAL GOODS

The trend estimate of non-rural goods exports rose \$72m (1%) to \$11,064m.

In seasonally adjusted terms, exports of non-rural goods rose \$378m (3%) to \$11,218m.

The main components contributing to the rise in the seasonally adjusted estimates were:

- coal, coke and briquettes, up \$209m (12%)
- other manufactures, up \$191m (15%)
- other non-rural, up \$73m (6%).

Partly offsetting these effects was metal ores and minerals, down \$106m (4%).

In original terms, exports of non-rural goods fell \$1,401m (12%) to \$10,113m.

ANALYSIS AND COMMENTS *continued*

Exports of goods *continued*

OTHER GOODS

The trend estimate of other goods exports rose \$14m (1%) to \$962m.

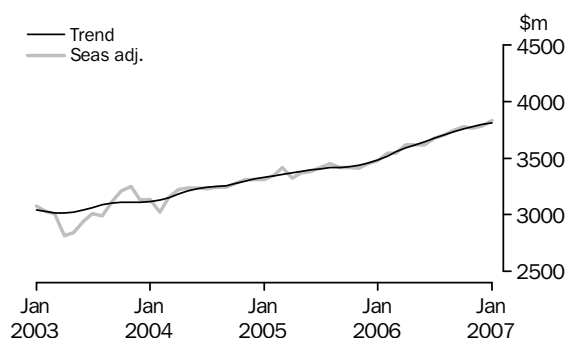
In seasonally adjusted terms, exports of other goods fell \$47m (5%) to \$981m.

The main component contributing to the fall in the seasonally adjusted series was non-monetary gold, down \$66m (7%), partly offset by goods for processing, up \$22m.

In original terms, exports of other goods fell \$47m (5%) to \$975m.

Exports of services

SERVICES CREDITS



In trend terms, services credits rose \$12m to \$3,809m.

Seasonally adjusted, services credits rose \$44m (1%) to \$3,827m.

The components that contributed to the rise in the seasonally adjusted estimates were:

- travel services, up \$34m (2%)
- transportation services, up \$12m (2%).

Seasonally adjusted, tourism related services credits rose \$38m (2%) to \$2,450m. This series is seasonally adjusted independently to the series that comprise services credits.

IMPORTS OF GOODS AND SERVICES

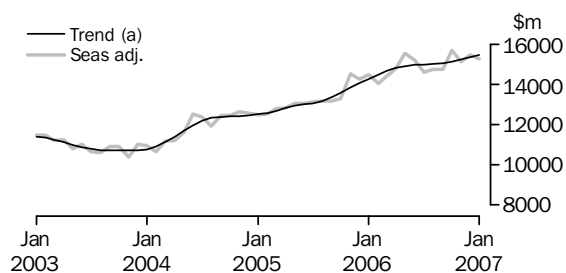
The trend estimate of goods and services debits rose \$105m (1%) between December 2006 and January 2007 to \$19,160m.

In seasonally adjusted terms, goods and services debits fell \$156m (1%) to \$18,995m.

Intermediate and other merchandise goods fell \$181m (3%) and capital goods fell \$121m (3%) while other goods rose \$114m (22%) and consumption goods rose \$10m. Services debits rose \$21m (1%).

Imports of goods

GOODS DEBITS



(a) Trend estimates exclude abnormal imports of aircraft in December 2002.

ANALYSIS AND COMMENTS *continued*

Imports of goods continued

CONSUMPTION GOODS

The trend estimate of imports of consumption goods rose \$32m (1%) to \$4,678m.

In seasonally adjusted terms, imports of consumption goods rose \$10m to \$4,646m.

The main components contributing to the rise in the seasonally adjusted estimates were:

- consumption goods n.e.s., up \$38m (3%)
- non-industrial transport equipment, up \$18m (1%).

Partly offsetting these effects was the household electrical items component, down \$39m (10%).

In original terms, imports of consumption goods rose \$18m to \$4,362m.

CAPITAL GOODS

The trend estimate of imports of capital goods rose \$51m (1%) to \$3,534m.

In seasonally adjusted terms, imports of capital goods fell \$121m (3%) to \$3,467m.

The main component contributing to the fall in the seasonally adjusted estimates was civil aircraft, down \$219m.

Partly offsetting this effect were:

- machinery and industrial equipment, up \$40m (3%)
- industrial transport equipment n.e.s., up \$40m (7%).

In original terms, imports of capital goods fell \$322m (9%) to \$3,224m.

INTERMEDIATE AND OTHER MERCHANDISE GOODS

The trend estimate of imports of intermediate and other merchandise goods rose \$14m to \$6,629m.

In seasonally adjusted terms, imports of intermediate and other merchandise goods fell \$181m (3%) to \$6,528m.

The main components contributing to the fall in the seasonally adjusted estimates were:

- fuels and lubricants, down \$341m (18%), with volumes of crude oil imports down 10%
- other merchandise goods, down \$70m (45%)
- food and beverages, mainly for industry, down \$40m (39%).

Partly offsetting these effects were:

- organic and inorganic chemicals, up \$129m (48%)
- other parts for capital goods, up \$125m (13%)
- iron and steel, up \$52m (17%).

In original terms, intermediate and other merchandise goods rose \$215m (3%) to \$6,575m.

OTHER GOODS

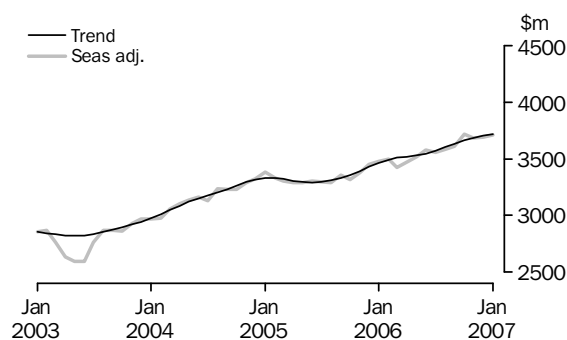
The trend estimate of imports of other goods fell \$7m (1%) to \$601m.

In both original and seasonally adjusted terms, other goods imports rose \$114m (22%) to \$643m.

The main component contributing to the rise in these estimates was non-monetary gold, up \$152m (57%), partly offset by goods for processing, down \$36m (40%).

Imports of services

SERVICES DEBITS



In trend terms, services debits rose \$15m to \$3,718m.

Seasonally adjusted, services debits rose \$21m (1%) to \$3,711m.

The main components that contributed to the rise in the seasonally adjusted estimates were:

- travel services, up \$24m (2%)
- transportation services, up \$12m (1%).

Partly offsetting these effects was other services, down \$15m (1%).

Seasonally adjusted, tourism related services debits fell \$35m (2%) to \$1,919m. This series is seasonally adjusted independently to the series that comprise services debits.

GOODS AND SERVICES(a), Summary: **Seasonally Adjusted and Trend Estimates**

| Months | BALANCE | CREDITS | | | | | DEBITS | | | | | |
|---------------------|--------------------------------|-----------------------------------|----------------|-------------------|------------------------------------|-------------------|-----------------------------------|----------------|---------------------------|------------------|---|-------------------|
| | On goods and services | Total goods and services | Total goods | Rural goods(b) | Non-rural and other goods(b) | Total services | Total goods and services | Total goods | Con- sumption goods | Capital goods | Inter- mediate and other goods | Total services |
| | \$m | \$m | \$m | \$m | \$m | \$m | \$m | \$m | \$m | \$m | \$m | \$m |
| SEASONALLY ADJUSTED | | | | | | | | | | | | |
| 2005 | | | | | | | | | | | | |
| November | -2 197 | 15 682 | 12 269 | 2 026 | 10 243 | 3 413 | -17 879 | -14 503 | -4 358 | -3 650 | -6 494 | -3 376 |
| December | -696 | 17 003 | 13 557 | 2 139 | 11 418 | 3 447 | -17 699 | -14 249 | -4 288 | -3 538 | -6 423 | -3 450 |
| 2006 | | | | | | | | | | | | |
| January | -2 179 | 15 768 | 12 292 | 2 176 | 10 116 | 3 476 | -17 947 | -14 473 | -4 232 | -3 615 | -6 625 | -3 474 |
| February | -139 | 17 396 | 13 855 | 2 123 | 11 732 | 3 542 | -17 536 | -14 039 | -4 115 | -3 166 | -6 758 | -3 497 |
| March | -1 257 | 16 571 | 13 027 | 2 239 | 10 789 | 3 543 | -17 827 | -14 402 | -4 196 | -3 600 | -6 606 | -3 425 |
| April | -741 | 17 536 | 13 917 | 2 157 | 11 760 | 3 618 | -18 277 | -14 804 | -4 390 | -3 346 | -7 067 | -3 473 |
| May | -2 050 | 16 982 | 13 366 | 2 131 | 11 235 | 3 616 | -19 032 | -15 517 | -4 364 | -3 438 | -7 716 | -3 515 |
| June | -433 | 18 324 | 14 708 | 2 132 | 12 576 | 3 616 | -18 757 | -15 180 | -4 404 | -3 384 | -7 392 | -3 576 |
| July | -455 | 17 707 | 14 028 | 2 225 | 11 804 | 3 679 | -18 163 | -14 605 | -4 399 | -3 056 | -7 150 | -3 558 |
| August | -401 | 17 932 | 14 229 | 2 238 | 11 991 | 3 703 | -18 332 | -14 749 | -4 427 | -3 243 | -7 080 | -3 583 |
| September | -798 | 17 575 | 13 832 | 2 216 | 11 616 | 3 743 | -18 373 | -14 760 | -4 394 | -3 303 | -7 062 | -3 613 |
| October | -1 467 | 17 937 | 14 160 | 2 205 | 11 955 | 3 777 | -19 404 | -15 685 | -4 655 | -3 461 | -7 569 | -3 719 |
| November | -889 | 17 915 | 14 153 | 2 235 | 11 919 | 3 762 | -18 804 | -15 121 | -4 653 | -3 370 | -7 098 | -3 683 |
| December | -1 379 | 17 773 | 13 990 | 2 122 | 11 868 | 3 783 | -19 151 | -15 462 | -4 636 | -3 588 | -7 238 | -3 690 |
| 2007 | | | | | | | | | | | | |
| January | -876 | 18 119 | 14 293 | 2 094 | 12 199 | 3 827 | -18 995 | -15 284 | -4 646 | -3 467 | -7 171 | -3 711 |
| TREND ESTIMATES | | | | | | | | | | | | |
| 2005 | | | | | | | | | | | | |
| November | -1 346 | 15 873 | 12 439 | 2 069 | 10 370 | 3 434 | -17 219 | -13 827 | -4 158 | -3 424 | -6 245 | -3 392 |
| December | -1 289 | 16 192 | 12 738 | 2 105 | 10 633 | 3 454 | -17 481 | -14 051 | -4 189 | -3 496 | -6 367 | -3 429 |
| 2006 | | | | | | | | | | | | |
| January | -1 240 | 16 492 | 13 008 | 2 139 | 10 869 | 3 484 | -17 731 | -14 268 | -4 217 | -3 518 | -6 533 | -3 463 |
| February | -1 209 | 16 758 | 13 238 | 2 161 | 11 077 | 3 520 | -17 966 | -14 478 | -4 243 | -3 496 | -6 738 | -3 489 |
| March | -1 189 | 16 986 | 13 430 | 2 169 | 11 261 | 3 556 | -18 174 | -14 668 | -4 272 | -3 447 | -6 949 | -3 507 |
| April | -987 | 17 340 | 13 753 | 2 170 | (c) 11 583 | 3 588 | -18 327 | -14 809 | -4 301 | -3 388 | -7 120 | -3 518 |
| May | -909 | 17 528 | 13 910 | 2 171 | 11 739 | 3 617 | -18 436 | -14 908 | -4 335 | -3 338 | -7 236 | -3 528 |
| June | -823 | 17 688 | 14 042 | 2 180 | 11 862 | 3 646 | -18 511 | -14 966 | -4 377 | -3 295 | -7 294 | -3 545 |
| July | -758 | 17 794 | 14 119 | 2 196 | 11 923 | 3 675 | -18 552 | -14 981 | -4 416 | -3 268 | -7 297 | -3 571 |
| August | -757 | 17 835 | 14 131 | 2 210 | 11 921 | 3 704 | -18 592 | -14 990 | -4 455 | -3 271 | -7 264 | -3 602 |
| September | -819 | 17 849 | 14 117 | 2 215 | 11 902 | 3 732 | -18 667 | -15 034 | -4 501 | -3 309 | -7 223 | -3 633 |
| October | -943 | 17 852 | 14 096 | 2 205 | 11 891 | 3 757 | -18 795 | -15 134 | -4 555 | -3 370 | -7 210 | -3 661 |
| November | -1 062 | 17 874 | 14 096 | 2 185 | 11 911 | 3 778 | -18 936 | -15 252 | -4 605 | -3 430 | -7 217 | -3 684 |
| December | -1 157 | 17 898 | 14 101 | 2 160 | 11 941 | 3 797 | -19 055 | -15 352 | -4 646 | -3 483 | -7 224 | -3 703 |
| 2007 | | | | | | | | | | | | |
| January | -1 192 | 17 967 | 14 158 | 2 132 | 12 026 | 3 809 | -19 160 | -15 442 | -4 678 | -3 534 | -7 230 | -3 718 |

(a) For sign conventions, see paragraph 9 of the Explanatory Notes.

(b) For all time periods, estimates for sugar, sugar preparations and honey are included in Non-rural and other goods.

(c) A trend break of \$150m has been applied to Non-rural and other goods credits and related aggregates in April 2006.

GOODS AND SERVICES(a), Summary: Original

| | BALANCE | CREDITS | | | | | DEBITS | | | | | |
|------------------------|--|---|------------------------|---------------------------|---|---------------------------|---|------------------------|------------------------------------|--------------------------|---|---------------------------|
| | <i>On goods and services</i> | <i>Total goods and services</i> | <i>Total goods</i> | <i>Rural goods(b)</i> | <i>Non-rural and other goods(b)</i> | <i>Total services</i> | <i>Total goods and services</i> | <i>Total goods</i> | <i>Con- sumption goods</i> | <i>Capital goods</i> | <i>Inter- mediate and other goods</i> | <i>Total services</i> |
| | \$m | \$m | \$m | \$m | \$m | \$m | \$m | \$m | \$m | \$m | \$m | \$m |
| FINANCIAL YEAR | | | | | | | | | | | | |
| 2003-04 | -21 509 | 147 205 | 109 459 | 24 577 | 84 882 | 37 746 | -168 714 | -133 018 | -42 917 | -32 118 | -57 983 | -35 696 |
| 2004-05 | -22 626 | 167 562 | 127 867 | 25 687 | 102 180 | 39 695 | -190 188 | -150 873 | -47 143 | -35 967 | -67 763 | -39 315 |
| 2005-06 | -14 469 | 196 325 | 154 425 | 25 312 | 129 113 | 41 900 | -210 794 | -169 716 | -50 322 | -39 996 | -79 398 | -41 078 |
| MONTHS | | | | | | | | | | | | |
| 2005 | | | | | | | | | | | | |
| November | -2 986 | 15 697 | 12 214 | 2 020 | 10 194 | 3 483 | -18 683 | -15 415 | -4 852 | -3 934 | -6 629 | -3 268 |
| December | 80 | 17 576 | 14 142 | 2 252 | 11 890 | 3 434 | -17 496 | -13 877 | -4 128 | -3 556 | -6 193 | -3 619 |
| 2006 | | | | | | | | | | | | |
| January | -2 781 | 14 394 | 10 941 | 1 818 | 9 123 | 3 453 | -17 175 | -13 562 | -3 806 | -3 267 | -6 489 | -3 613 |
| February | 303 | 16 098 | 12 484 | 2 025 | 10 459 | 3 614 | -15 795 | -12 740 | -3 630 | -2 677 | -6 433 | -3 055 |
| March | -953 | 16 963 | 13 313 | 2 329 | 10 984 | 3 650 | -17 916 | -14 581 | -4 128 | -3 541 | -6 912 | -3 335 |
| April | 242 | 17 371 | 13 700 | 2 148 | 11 552 | 3 671 | -17 129 | -13 785 | -3 944 | -3 111 | -6 730 | -3 344 |
| May | -1 997 | 17 223 | 13 776 | 2 268 | 11 508 | 3 447 | -19 220 | -15 868 | -4 267 | -3 636 | -7 965 | -3 352 |
| June | -775 | 18 195 | 14 861 | 2 167 | 12 694 | 3 334 | -18 970 | -15 314 | -4 288 | -3 651 | -7 375 | -3 656 |
| July | 117 | 18 205 | 14 481 | 2 196 | 12 285 | 3 724 | -18 088 | -14 403 | -4 385 | -3 022 | -6 996 | -3 685 |
| August | -815 | 18 197 | 14 420 | 2 254 | 12 166 | 3 777 | -19 012 | -15 463 | -4 763 | -3 388 | -7 312 | -3 549 |
| September | -1 384 | 17 774 | 14 168 | 2 266 | 11 902 | 3 606 | -19 158 | -15 234 | -4 806 | -3 313 | -7 115 | -3 924 |
| October | -1 860 | 18 684 | 14 764 | 2 278 | 12 486 | 3 920 | -20 544 | -16 683 | -5 270 | -3 649 | -7 764 | -3 861 |
| November | -1 642 | 17 871 | 14 037 | 2 213 | 11 824 | 3 834 | -19 513 | -15 945 | -5 142 | -3 623 | -7 180 | -3 568 |
| December | -100 | 18 542 | 14 764 | 2 228 | 12 536 | 3 778 | -18 642 | -14 779 | -4 344 | -3 546 | -6 889 | -3 863 |
| 2007 | | | | | | | | | | | | |
| January | -2 115 | 16 552 | 12 775 | 1 687 | 11 088 | 3 777 | -18 667 | -14 804 | -4 362 | -3 224 | -7 218 | -3 863 |
| FINANCIAL YEAR TO DATE | | | | | | | | | | | | |
| 7 months ended | | | | | | | | | | | | |
| January | | | | | | | | | | | | |
| 2006 | -11 289 | 110 475 | 86 291 | 14 375 | 71 916 | 24 184 | -121 764 | -97 428 | -30 065 | -23 380 | -43 983 | -24 336 |
| 2007 | -7 799 | 125 825 | 99 409 | 15 122 | 84 287 | 26 416 | -133 624 | -107 311 | -33 072 | -23 765 | -50 474 | -26 313 |

(a) For sign conventions, see paragraph 9 of the Explanatory Notes.

(b) For all time periods, estimates for sugar, sugar preparations and honey are included in Non-rural and other goods.

| | | | | | | | 7 MONTHS ENDED JANUARY..... | | Change |
|---|----------------|----------------|----------------|---------------|---------------|---------------|--------------------------------|---------------|-------------|
| | 2003-04 | 2004-05 | 2005-06 | Nov 2006 | Dec 2006 | Jan 2007 | 2006 | 2007 | |
| | \$m | \$m | \$m | \$m | \$m | \$m | \$m | \$m | % |
| Total goods credits | 109 459 | 127 867 | 154 425 | 14 037 | 14 764 | 12 775 | 86 291 | 99 409 | 15.2 |
| <i>Rural goods</i> | 24 577 | 25 687 | 25 312 | 2 213 | 2 228 | 1 687 | 14 375 | 15 122 | 5.2 |
| Meat and meat preparations | 5 758 | 6 937 | 6 709 | 696 | 674 | 420 | 3 786 | 4 260 | 12.5 |
| Cereal grains and cereal preparations | 5 093 | 5 159 | 4 852 | 322 | 317 | 314 | 2 586 | 2 771 | 7.2 |
| Wool and sheepskins | 2 778 | 2 838 | 2 544 | 255 | 285 | 178 | 1 397 | 1 589 | 13.7 |
| Other rural (a) | 10 948 | 10 753 | 11 207 | 940 | 952 | 775 | 6 606 | 6 502 | -1.6 |
| <i>Non-rural goods</i> | 76 908 | 94 328 | 118 164 | 10 988 | 11 514 | 10 113 | 66 716 | 77 336 | 15.9 |
| Metal ores and minerals | 14 843 | 19 854 | 28 936 | 2 901 | 3 270 | 2 675 | 15 412 | 20 725 | 34.5 |
| Coal, coke and briquettes | 11 002 | 17 236 | 24 353 | 1 785 | 1 841 | 2 031 | 14 408 | 13 327 | -7.5 |
| Other mineral fuels | 8 777 | 11 151 | 13 220 | 1 180 | 1 386 | 1 213 | 7 880 | 9 449 | 19.9 |
| Metals (excl. non-monetary gold) | 7 757 | 8 668 | 11 278 | 1 185 | 1 333 | 1 270 | 5 759 | 8 398 | 45.8 |
| Machinery | 6 837 | 7 488 | 8 087 | 680 | 766 | 509 | 4 642 | 4 872 | 5.0 |
| Transport equipment | 5 155 | 4 943 | 5 316 | 414 | 463 | 182 | 3 112 | 2 621 | -15.8 |
| Other manufactures | 13 279 | 14 043 | 14 926 | 1 463 | 1 320 | 1 126 | 8 665 | 9 361 | 8.0 |
| Other non-rural (incl. sugar and beverages) | 9 258 | 10 945 | 12 048 | 1 380 | 1 135 | 1 107 | 6 838 | 8 583 | 25.5 |
| <i>Other goods</i> | 7 974 | 7 852 | 10 949 | 836 | 1 022 | 975 | 5 200 | 6 951 | 33.7 |
| Goods for processing | 97 | 241 | 368 | 52 | 14 | 36 | 40 | 221 | 452.5 |
| Repairs on goods | 75 | 67 | 74 | 6 | 7 | 5 | 47 | 45 | -4.3 |
| Goods procured in ports by carriers | 771 | 1 072 | 1 420 | 110 | 110 | 109 | 786 | 820 | 4.3 |
| Non-monetary gold | 7 031 | 6 472 | 9 087 | 668 | 891 | 825 | 4 327 | 5 865 | 35.5 |

(a) For all time periods, estimates for sugar, sugar preparations and honey are included in Other non-rural.

GOODS DEBITS(a): Original

| | | | | | | | 7 MONTHS ENDED JANUARY | | Change |
|---|-----------------|-----------------|-----------------|----------------|----------------|----------------|---------------------------|-----------------|-------------|
| | 2003-04 | 2004-05 | 2005-06 | Nov 2006 | Dec 2006 | Jan 2007 | 2006 | 2007 | |
| | \$m | \$m | \$m | \$m | \$m | \$m | \$m | \$m | % |
| Total goods debits | -133 018 | -150 873 | -169 716 | -15 945 | -14 779 | -14 804 | -97 428 | -107 311 | 10.1 |
| <i>Consumption goods</i> | -42 917 | -47 143 | -50 322 | -5 142 | -4 344 | -4 362 | -30 065 | -33 072 | 10.0 |
| Food and beverages, mainly for consumption | -5 167 | -5 767 | -6 170 | -761 | -646 | -626 | -3 700 | -4 361 | 17.9 |
| Household electrical items | -3 793 | -4 024 | -4 291 | -522 | -381 | -286 | -2 586 | -2 910 | 12.5 |
| Non-industrial transport equipment | -12 325 | -13 003 | -13 589 | -1 301 | -1 270 | -1 141 | -7 887 | -8 682 | 10.1 |
| Textiles, clothing and footwear | -5 078 | -5 811 | -6 365 | -573 | -473 | -640 | -3 822 | -4 127 | 8.0 |
| Toys, books and leisure goods | -3 594 | -3 740 | -4 055 | -433 | -295 | -295 | -2 506 | -2 675 | 6.7 |
| Consumption goods n.e.s. | -12 960 | -14 798 | -15 852 | -1 552 | -1 279 | -1 374 | -9 564 | -10 317 | 7.9 |
| <i>Capital goods</i> | -32 118 | -35 967 | -39 996 | -3 623 | -3 546 | -3 224 | -23 380 | -23 765 | 1.6 |
| Machinery and industrial equipment | -11 069 | -13 409 | -14 328 | -1 433 | -1 349 | -1 331 | -8 415 | -9 275 | 10.2 |
| ADP equipment | -5 138 | -5 761 | -6 073 | -527 | -555 | -515 | -3 397 | -3 795 | 11.7 |
| Telecommunications equipment | -4 105 | -4 568 | -5 334 | -559 | -447 | -358 | -2 978 | -3 163 | 6.2 |
| Civil aircraft | -3 061 | -2 496 | -2 967 | -24 | -246 | -27 | -2 131 | -782 | -63.3 |
| Industrial transport equipment n.e.s. | -4 139 | -4 981 | -5 495 | -566 | -500 | -580 | -3 103 | -3 426 | 10.4 |
| Capital goods n.e.s. | -4 606 | -4 752 | -5 799 | -514 | -449 | -413 | -3 356 | -3 324 | -1.0 |
| <i>Intermediate and other merchandise goods</i> | -54 266 | -63 730 | -72 722 | -6 686 | -6 360 | -6 575 | -40 838 | -46 088 | 12.9 |
| Food and beverages, mainly for industry | -625 | -659 | -651 | -77 | -90 | -70 | -379 | -504 | 33.0 |
| Primary industrial supplies n.e.s. | -1 079 | -1 052 | -1 193 | -113 | -141 | -103 | -648 | -880 | 35.8 |
| Fuels and lubricants | -9 918 | -14 720 | -21 014 | -1 559 | -1 911 | -1 570 | -10 941 | -12 318 | 12.6 |
| Parts for transport equipment | -6 547 | -7 008 | -7 314 | -747 | -620 | -659 | -4 189 | -4 883 | 16.6 |
| Parts for ADP equipment | -1 812 | -1 787 | -1 857 | -146 | -151 | -127 | -1 025 | -1 060 | 3.4 |
| Other parts for capital goods | -8 548 | -9 485 | -10 154 | -1 014 | -912 | -1 084 | -5 903 | -6 815 | 15.4 |
| Organic and inorganic chemicals | -3 047 | -3 622 | -4 134 | -492 | -272 | -416 | -2 345 | -2 566 | 9.4 |
| Paper and paperboard | -2 242 | -2 313 | -2 302 | -208 | -165 | -202 | -1 389 | -1 421 | 2.3 |
| Textile yarn and fabrics | -1 574 | -1 452 | -1 361 | -124 | -95 | -113 | -802 | -822 | 2.5 |
| Iron and steel | -2 026 | -3 008 | -3 239 | -356 | -274 | -358 | -1 969 | -2 139 | 8.6 |
| Plastics | -2 177 | -2 428 | -2 517 | -269 | -244 | -262 | -1 476 | -1 738 | 17.8 |
| Processed industrial supplies n.e.s. | -13 437 | -15 142 | -15 856 | -1 492 | -1 329 | -1 525 | -9 119 | -10 151 | 11.3 |
| Other merchandise goods | -1 234 | -1 054 | -1 130 | -89 | -156 | -86 | -653 | -791 | 21.1 |
| <i>Other goods</i> | -3 717 | -4 033 | -6 676 | -494 | -529 | -643 | -3 145 | -4 386 | 39.5 |
| Goods for processing | -64 | -243 | -445 | -1 | -91 | -55 | -153 | -355 | 132.0 |
| Repairs on goods | -219 | -182 | -115 | -8 | -7 | -10 | -75 | -86 | 14.7 |
| Goods procured in ports by carriers | -802 | -1 049 | -1 406 | -161 | -162 | -157 | -805 | -1 069 | 32.8 |
| Non-monetary gold | -2 632 | -2 559 | -4 710 | -324 | -269 | -421 | -2 112 | -2 876 | 36.2 |

(a) For sign conventions, see paragraph 9 of the Explanatory Notes.

GOODS CREDITS: Seasonally Adjusted

| | Apr 2006 | May 2006 | Jun 2006 | Jul 2006 | Aug 2006 | Sep 2006 | Oct 2006 | Nov 2006 | Dec 2006 | Jan 2007 |
|---|---------------|---------------|---------------|---------------|---------------|---------------|---------------|---------------|---------------|---------------|
| | \$m | \$m | \$m | \$m | \$m | \$m | \$m | \$m | \$m | \$m |
| Total goods credits | 13 917 | 13 366 | 14 708 | 14 028 | 14 229 | 13 832 | 14 160 | 14 153 | 13 990 | 14 293 |
| <i>Rural goods</i> | 2 157 | 2 131 | 2 132 | 2 225 | 2 238 | 2 216 | 2 205 | 2 235 | 2 122 | 2 094 |
| Meat and meat preparations | 568 | 551 | 579 | 583 | 613 | 608 | 625 | 638 | 643 | 661 |
| Cereal grains and cereal preparations | 421 | 469 | 404 | 474 | 509 | 487 | 405 | 367 | 332 | 287 |
| Wool and sheepskins | 249 | 187 | 216 | 230 | 199 | 222 | 237 | 235 | 251 | 270 |
| Other rural(a) | 920 | 925 | 933 | 937 | 917 | 900 | 938 | 994 | 896 | 875 |
| <i>Non-rural goods</i> | 10 389 | 10 091 | 11 162 | 10 792 | 10 922 | 10 646 | 10 915 | 11 080 | 10 840 | 11 218 |
| Metal ores and minerals | 2 610 | 2 696 | 3 214 | 2 891 | 2 870 | 2 853 | 3 035 | 2 985 | 2 999 | 2 893 |
| Coal, coke and briquettes | 2 063 | 1 923 | 1 976 | 1 954 | 1 988 | 1 810 | 1 758 | 1 847 | 1 813 | 2 022 |
| Other mineral fuels | 1 190 | 967 | 1 219 | 1 294 | 1 271 | 1 263 | 1 373 | 1 241 | 1 252 | 1 244 |
| Metals (excl. non-monetary gold) | 1 045 | 1 148 | 1 221 | 1 180 | 1 188 | 1 129 | 1 219 | 1 203 | 1 283 | 1 288 |
| Machinery | 684 | 674 | 714 | 710 | 705 | 696 | 687 | 669 | 676 | 696 |
| Transport equipment | 438 | 409 | 423 | 305 | 418 | 356 | 437 | 396 | 378 | 373 |
| Other manufactures | 1 307 | 1 147 | 1 283 | 1 347 | 1 310 | 1 304 | 1 291 | 1 425 | 1 267 | 1 458 |
| Other non-rural (incl. sugar and beverages) | 1 052 | 1 128 | 1 114 | 1 111 | 1 173 | 1 235 | 1 115 | 1 314 | 1 171 | 1 244 |
| <i>Other goods</i> | 1 371 | 1 144 | 1 414 | 1 012 | 1 069 | 970 | 1 040 | 838 | 1 028 | 981 |
| Goods for processing(b) | 80 | 90 | 66 | 67 | 11 | 36 | 5 | 52 | 14 | 36 |
| Repairs on goods(b) | 5 | 6 | 6 | 7 | 6 | 9 | 5 | 6 | 7 | 5 |
| Goods procured in ports by carriers | 132 | 132 | 131 | 118 | 133 | 119 | 94 | 112 | 116 | 115 |
| Non-monetary gold(b) | 1 154 | 916 | 1 211 | 820 | 919 | 806 | 936 | 668 | 891 | 825 |

(a) For all time periods, estimates for sugar, sugar preparations and honey are included in Other non-rural.

(b) This component is not seasonally adjusted.

GOODS DEBITS(a): Seasonally Adjusted

| | Apr 2006 | May 2006 | Jun 2006 | Jul 2006 | Aug 2006 | Sep 2006 | Oct 2006 | Nov 2006 | Dec 2006 | Jan 2007 |
|---|----------------|----------------|----------------|----------------|----------------|----------------|----------------|----------------|----------------|----------------|
| | \$m | \$m | \$m | \$m | \$m | \$m | \$m | \$m | \$m | \$m |
| Total goods debits | -14 804 | -15 517 | -15 180 | -14 605 | -14 749 | -14 760 | -15 685 | -15 121 | -15 462 | -15 284 |
| <i>Consumption goods</i> | -4 390 | -4 364 | -4 404 | -4 399 | -4 427 | -4 394 | -4 655 | -4 653 | -4 636 | -4 646 |
| Food and beverages, mainly for consumption | -538 | -543 | -535 | -552 | -559 | -566 | -571 | -664 | -616 | -607 |
| Household electrical items | -398 | -382 | -371 | -358 | -382 | -382 | -433 | -395 | -388 | -349 |
| Non-industrial transport equipment | -1 137 | -1 166 | -1 210 | -1 170 | -1 240 | -1 155 | -1 309 | -1 265 | -1 282 | -1 300 |
| Textiles, clothing and footwear | -565 | -551 | -565 | -562 | -552 | -561 | -575 | -578 | -577 | -566 |
| Toys, books and leisure goods | -374 | -355 | -350 | -344 | -344 | -352 | -343 | -351 | -355 | -367 |
| Consumption goods n.e.s. | -1 378 | -1 367 | -1 373 | -1 411 | -1 350 | -1 379 | -1 423 | -1 400 | -1 418 | -1 456 |
| <i>Capital goods</i> | -3 346 | -3 438 | -3 384 | -3 056 | -3 243 | -3 303 | -3 461 | -3 370 | -3 588 | -3 467 |
| Machinery and industrial equipment | -1 289 | -1 210 | -1 298 | -1 206 | -1 229 | -1 207 | -1 343 | -1 308 | -1 276 | -1 316 |
| ADP equipment | -513 | -467 | -518 | -532 | -526 | -533 | -605 | -563 | -597 | -606 |
| Telecommunications equipment | -497 | -454 | -453 | -454 | -387 | -463 | -448 | -469 | -456 | -469 |
| Civil aircraft(b) | -100 | -232 | -189 | -55 | -232 | -118 | -80 | -24 | -246 | -27 |
| Industrial transport equipment n.e.s. | -451 | -432 | -441 | -324 | -448 | -497 | -520 | -528 | -548 | -588 |
| Capital goods n.e.s. | -496 | -642 | -486 | -485 | -421 | -485 | -465 | -478 | -465 | -462 |
| <i>Intermediate and other merchandise goods</i> | -6 274 | -6 770 | -6 644 | -6 404 | -6 625 | -6 470 | -6 642 | -6 604 | -6 709 | -6 528 |
| Food and beverages, mainly for industry | -57 | -58 | -57 | -46 | -74 | -71 | -73 | -77 | -102 | -62 |
| Primary industrial supplies n.e.s.(c) | -107 | -101 | -136 | -98 | -130 | -101 | -183 | -113 | -133 | -114 |
| Fuels and lubricants(b) | -1 776 | -2 311 | -2 178 | -1 808 | -1 992 | -1 715 | -1 763 | -1 559 | -1 911 | -1 570 |
| Parts for transport equipment | -628 | -662 | -629 | -664 | -690 | -688 | -720 | -689 | -681 | -680 |
| Parts for ADP equipment | -156 | -162 | -166 | -145 | -158 | -175 | -152 | -153 | -154 | -141 |
| Other parts for capital goods | -935 | -873 | -883 | -895 | -902 | -924 | -947 | -958 | -968 | -1 093 |
| Organic and inorganic chemicals(c) | -364 | -359 | -296 | -373 | -344 | -361 | -382 | -580 | -270 | -399 |
| Paper and paperboard | -212 | -191 | -195 | -202 | -202 | -204 | -184 | -192 | -190 | -195 |
| Textile yarn and fabrics | -114 | -117 | -115 | -117 | -115 | -117 | -115 | -117 | -114 | -111 |
| Iron and steel | -243 | -235 | -258 | -253 | -264 | -291 | -324 | -382 | -301 | -353 |
| Plastics | -213 | -214 | -227 | -237 | -242 | -237 | -246 | -246 | -257 | -246 |
| Processed industrial supplies n.e.s. | -1 363 | -1 390 | -1 378 | -1 410 | -1 427 | -1 463 | -1 457 | -1 447 | -1 470 | -1 479 |
| Other merchandise goods(b) | -106 | -99 | -127 | -155 | -85 | -124 | -96 | -89 | -156 | -86 |
| <i>Other goods</i> | -793 | -946 | -748 | -746 | -455 | -592 | -927 | -494 | -529 | -643 |
| Goods for processing(b) | -1 | -128 | -45 | -139 | -67 | -1 | -1 | -1 | -91 | -55 |
| Repairs on goods(b) | -7 | -13 | -7 | -14 | -13 | -17 | -17 | -8 | -7 | -10 |
| Goods procured in ports by carriers(b) | -126 | -126 | -125 | -142 | -142 | -144 | -161 | -161 | -162 | -157 |
| Non-monetary gold(d) | -659 | -679 | -571 | -451 | -233 | -430 | -748 | -324 | -269 | -421 |

(a) For sign conventions, see paragraph 9 of the Explanatory Notes.

(b) These components are not seasonally adjusted.

(c) In using these seasonally adjusted series, care should be exercised because of the difficulties associated with reliably estimating the seasonal pattern.

(d) From October 1995, this component is not seasonally adjusted.

Apr 2006 May 2006 Jun 2006 Jul 2006 Aug 2006 Sep 2006 Oct 2006 Nov 2006 Dec 2006 Jan 2007

\$m \$m \$m \$m \$m \$m \$m \$m \$m \$m

| | | | | | | | | | | |
|---|---------------|---------------|---------------|---------------|---------------|---------------|---------------|---------------|---------------|---------------|
| Total goods credits | 13 753 | 13 910 | 14 042 | 14 119 | 14 131 | 14 117 | 14 096 | 14 096 | 14 101 | 14 158 |
| <i>Rural goods</i> | 2 170 | 2 171 | 2 180 | 2 196 | 2 210 | 2 215 | 2 205 | 2 185 | 2 160 | 2 132 |
| Meat and meat preparations | 564 | 569 | 577 | 587 | 600 | 613 | 625 | 636 | 646 | 654 |
| Cereal grains and cereal preparations | 448 | 455 | 463 | 469 | 466 | 448 | 418 | 381 | 345 | 309 |
| Wool and sheepskins | 221 | 219 | 216 | 214 | 216 | 223 | 232 | 241 | 250 | 258 |
| Other rural(a) | 936 | 929 | 924 | 925 | 929 | 931 | 930 | 926 | 919 | 911 |
| <i>Non-rural goods</i> | 10 420 | 10 543 | 10 669 | 10 770 | 10 837 | 10 884 | 10 911 | 10 951 | 10 992 | 11 064 |
| Metal ores and minerals | (b) 2 729 | 2 800 | 2 868 | 2 920 | 2 947 | 2 957 | 2 954 | 2 956 | 2 955 | 2 971 |
| Coal, coke and briquettes | 2 031 | 2 008 | 1 975 | 1 932 | 1 891 | 1 862 | 1 847 | 1 846 | 1 858 | 1 880 |
| Other mineral fuels | 1 147 | 1 158 | 1 186 | 1 224 | 1 263 | 1 288 | 1 291 | 1 283 | 1 269 | 1 256 |
| Metals (excl. non-monetary gold) | 1 077 | 1 120 | 1 156 | 1 177 | 1 186 | 1 192 | 1 204 | 1 225 | 1 247 | 1 271 |
| Machinery | 692 | 698 | 702 | 702 | 699 | 695 | 689 | 684 | 680 | 679 |
| Transport equipment | 418 | 407 | 396 | 387 | 383 | 386 | 390 | 392 | 391 | 391 |
| Other manufactures | 1 256 | 1 259 | 1 270 | 1 287 | 1 304 | 1 319 | 1 334 | 1 349 | 1 364 | 1 379 |
| Other non-rural (incl. sugar and beverages) | 1 069 | 1 093 | 1 117 | 1 142 | 1 165 | 1 184 | 1 201 | 1 216 | 1 228 | 1 237 |
| <i>Other goods</i> | 1 163 | 1 197 | 1 193 | 1 153 | 1 083 | 1 018 | 980 | 960 | 948 | 962 |
| Goods for processing | 69 | 73 | 67 | 55 | 41 | 31 | 26 | 25 | 26 | 27 |
| Repairs on goods | 5 | 6 | 6 | 7 | 7 | 7 | 7 | 6 | 6 | 6 |
| Goods procured in ports by carriers | 132 | 132 | 130 | 125 | 120 | 116 | 113 | 111 | 111 | 111 |
| Non-monetary gold | 957 | 986 | 990 | 966 | 916 | 865 | 834 | 818 | 806 | 818 |

(a) For all time periods, estimates for sugar, sugar preparations and honey are included in Other non-rural.

(b) A trend break of \$150m has been applied to Metal ores and minerals and related aggregates in April 2006.

GOODS DEBITS (a): Trend Estimates

| | Apr 2006 | May 2006 | Jun 2006 | Jul 2006 | Aug 2006 | Sep 2006 | Oct 2006 | Nov 2006 | Dec 2006 | Jan 2007 |
|---|----------------|----------------|----------------|----------------|----------------|----------------|----------------|----------------|----------------|----------------|
| | \$m | \$m | \$m | \$m | \$m | \$m | \$m | \$m | \$m | \$m |
| Total goods debits | -14 809 | -14 908 | -14 966 | -14 981 | -14 990 | -15 034 | -15 134 | -15 252 | -15 352 | -15 442 |
| <i>Consumption goods</i> | -4 301 | -4 335 | -4 377 | -4 416 | -4 455 | -4 501 | -4 555 | -4 605 | -4 646 | -4 678 |
| Food and beverages, mainly for consumption | -531 | -535 | -541 | -550 | -562 | -578 | -594 | -608 | -619 | -627 |
| Household electrical items | -381 | -378 | -377 | -379 | -385 | -390 | -394 | -393 | -388 | -382 |
| Non-industrial transport equipment | -1 128 | -1 151 | -1 176 | -1 197 | -1 214 | -1 230 | -1 249 | -1 268 | -1 284 | -1 300 |
| Textiles, clothing and footwear | -548 | -552 | -557 | -561 | -564 | -566 | -569 | -572 | -574 | -575 |
| Toys, books and leisure goods | -356 | -355 | -353 | -349 | -347 | -347 | -349 | -352 | -356 | -359 |
| Consumption goods n.e.s. | -1 356 | -1 363 | -1 373 | -1 380 | -1 385 | -1 390 | -1 400 | -1 412 | -1 424 | -1 434 |
| <i>Capital goods</i> | -3 388 | -3 338 | -3 295 | -3 268 | -3 271 | -3 309 | -3 370 | -3 430 | -3 483 | -3 534 |
| Machinery and industrial equipment | -1 255 | -1 252 | -1 246 | -1 242 | -1 246 | -1 258 | -1 275 | -1 291 | -1 303 | -1 317 |
| ADP equipment | -509 | -505 | -509 | -519 | -534 | -551 | -567 | -581 | -593 | -603 |
| Telecommunications equipment | -484 | -467 | -450 | -440 | -438 | -441 | -449 | -456 | -462 | -468 |
| Civil aircraft | -175 | -160 | -154 | -148 | -138 | -124 | -113 | -105 | -99 | -97 |
| Industrial transport equipment n.e.s. | -459 | -442 | -426 | -422 | -436 | -468 | -502 | -533 | -558 | -582 |
| Capital goods n.e.s. | -505 | -511 | -509 | -497 | -480 | -467 | -463 | -464 | -467 | -468 |
| <i>Intermediate and other merchandise goods</i> | -6 387 | -6 483 | -6 544 | -6 575 | -6 582 | -6 579 | -6 584 | -6 601 | -6 615 | -6 629 |
| Food and beverages, mainly for industry | -53 | -55 | -57 | -60 | -65 | -70 | -75 | -79 | -81 | -82 |
| Primary industrial supplies n.e.s. | -108 | -110 | -114 | -119 | -124 | -129 | -131 | -132 | -130 | -129 |
| Fuels and lubricants | -2 003 | -2 048 | -2 038 | -1 982 | -1 902 | -1 817 | -1 749 | -1 706 | -1 678 | -1 666 |
| Parts for transport equipment | -634 | -643 | -655 | -668 | -680 | -689 | -694 | -695 | -693 | -689 |
| Parts for ADP equipment | -161 | -160 | -159 | -159 | -160 | -159 | -157 | -154 | -151 | -149 |
| Other parts for capital goods | -879 | -885 | -892 | -897 | -906 | -921 | -945 | -972 | -999 | -1 026 |
| Organic and inorganic chemicals | -342 | -337 | -339 | -350 | -367 | -384 | -398 | -405 | -407 | -401 |
| Paper and paperboard | -195 | -197 | -199 | -200 | -199 | -197 | -195 | -193 | -191 | -190 |
| Textile yarn and fabrics | -115 | -115 | -115 | -116 | -116 | -116 | -116 | -115 | -114 | -113 |
| Iron and steel | -248 | -246 | -250 | -260 | -277 | -297 | -316 | -331 | -343 | -352 |
| Plastics | -213 | -218 | -225 | -232 | -238 | -242 | -245 | -248 | -250 | -251 |
| Processed industrial supplies n.e.s. | -1 340 | -1 359 | -1 386 | -1 412 | -1 431 | -1 443 | -1 453 | -1 462 | -1 470 | -1 474 |
| Other merchandise goods | -98 | -110 | -117 | -119 | -117 | -113 | -110 | -109 | -108 | -107 |
| <i>Other goods</i> | -733 | -754 | -750 | -723 | -682 | -645 | -626 | -616 | -608 | -601 |
| Goods for processing | -73 | -82 | -82 | -71 | -56 | -41 | -31 | -30 | -35 | -39 |
| Repairs on goods | -7 | -9 | -11 | -13 | -14 | -14 | -13 | -12 | -10 | -9 |
| Goods procured in ports by carriers | -120 | -125 | -131 | -137 | -143 | -149 | -154 | -158 | -161 | -162 |
| Non-monetary gold | -533 | -537 | -526 | -502 | -469 | -441 | -427 | -416 | -402 | -391 |

(a) For sign conventions, see paragraph 9 of the Explanatory Notes.

SERVICES (a)(b), Summary: Original

| | | | | | | | 7 MONTHS ENDED JANUARY | | |
|------------------------------------|----------------|----------------|----------------|---------------|---------------|---------------|---------------------------|----------------|------------|
| | 2003-04 | 2004-05 | 2005-06 | Nov 2006 | Dec 2006 | Jan 2007 | 2006 | 2007 | Change |
| | \$m | \$m | \$m | \$m | \$m | \$m | \$m | \$m | % |
| Services credits | 37 746 | 39 695 | 41 900 | 3 834 | 3 778 | 3 777 | 24 184 | 26 416 | 9.2 |
| <i>Transportation services</i> | 7 530 | 8 002 | 8 208 | 728 | 764 | 767 | 4 851 | 5 072 | 4.6 |
| Freight | 758 | 704 | 608 | 54 | 54 | 49 | 340 | 372 | 9.4 |
| Passenger and other | 6 772 | 7 298 | 7 600 | 674 | 710 | 718 | 4 511 | 4 700 | 4.2 |
| <i>Travel services</i> | 20 099 | 21 440 | 22 692 | 2 077 | 1 977 | 2 041 | 13 042 | 14 343 | 10.0 |
| <i>Other services</i> | 10 117 | 10 253 | 11 000 | 1 029 | 1 037 | 969 | 6 291 | 7 001 | 11.3 |
| Services debits | -35 696 | -39 315 | -41 078 | -3 568 | -3 863 | -3 863 | -24 336 | -26 313 | 8.1 |
| <i>Transportation services</i> | -11 970 | -13 796 | -14 508 | -1 334 | -1 351 | -1 261 | -8 526 | -9 170 | 7.6 |
| Freight | -6 056 | -7 500 | -7 776 | -740 | -670 | -670 | -4 587 | -4 804 | 4.7 |
| Passenger and other | -5 914 | -6 296 | -6 732 | -594 | -681 | -591 | -3 939 | -4 366 | 10.8 |
| <i>Travel services</i> | -12 527 | -14 507 | -15 090 | -1 156 | -1 417 | -1 586 | -9 216 | -9 809 | 6.4 |
| <i>Other services</i> | -11 199 | -11 012 | -11 480 | -1 078 | -1 095 | -1 016 | -6 594 | -7 334 | 11.2 |
| Memorandum items: | | | | | | | | | |
| Tourism related service credits(c) | 24 072 | 25 584 | 26 796 | 2 443 | 2 378 | 2 449 | 15 564 | 16 868 | 8.4 |
| Tourism related service debits(c) | -17 985 | -20 287 | -21 374 | -1 711 | -2 061 | -2 138 | -12 898 | -13 910 | 7.8 |

(a) For sign conventions, see paragraph 9 of the Explanatory Notes.

(b) For more detailed trade in services by commodity, see table 11.

(c) For a more detailed explanation of tourism related services, see paragraphs 15 and 16 of the Explanatory Notes.

SERVICES(a), Summary: Seasonally Adjusted and Trend Estimates

| | Apr 2006 | May 2006 | Jun 2006 | Jul 2006 | Aug 2006 | Sep 2006 | Oct 2006 | Nov 2006 | Dec 2006 | Jan 2007 |
|--|-------------|-------------|-------------|-------------|-------------|-------------|-------------|-------------|-------------|-------------|
| | \$m | \$m | \$m | \$m | \$m | \$m | \$m | \$m | \$m | \$m |

SEASONALLY ADJUSTED

| | | | | | | | | | | |
|------------------------------------|---------------|---------------|---------------|---------------|---------------|---------------|---------------|---------------|---------------|---------------|
| Services credits | 3 618 | 3 616 | 3 616 | 3 679 | 3 703 | 3 743 | 3 777 | 3 762 | 3 783 | 3 827 |
| Transportation services | 697 | 694 | 686 | 700 | 701 | 709 | 717 | 711 | 713 | 725 |
| Freight | 55 | 54 | 54 | 53 | 54 | 55 | 53 | 53 | 53 | 52 |
| Passenger and other | 642 | 639 | 631 | 647 | 648 | 654 | 663 | 658 | 660 | 673 |
| Travel services | 1 961 | 1 964 | 1 969 | 1 987 | 2 005 | 2 035 | 2 069 | 2 057 | 2 072 | 2 106 |
| Other services(b) | 960 | 958 | 961 | 992 | 997 | 999 | 991 | 995 | 997 | 995 |
| Services debits | -3 473 | -3 515 | -3 576 | -3 558 | -3 583 | -3 613 | -3 719 | -3 683 | -3 690 | -3 711 |
| Transportation services | -1 162 | -1 205 | -1 256 | -1 227 | -1 252 | -1 259 | -1 346 | -1 322 | -1 307 | -1 319 |
| Freight | -650 | -623 | -660 | -652 | -663 | -653 | -723 | -686 | -678 | -675 |
| Passenger and other | -512 | -582 | -596 | -575 | -590 | -606 | -623 | -636 | -629 | -644 |
| Travel services | -1 315 | -1 307 | -1 316 | -1 302 | -1 299 | -1 319 | -1 335 | -1 319 | -1 336 | -1 360 |
| Other services(b) | -996 | -1 003 | -1 005 | -1 028 | -1 032 | -1 036 | -1 038 | -1 042 | -1 047 | -1 032 |
| Memorandum items: | | | | | | | | | | |
| Tourism related service credits(c) | 2 302 | 2 296 | 2 302 | 2 330 | 2 337 | 2 369 | 2 435 | 2 406 | 2 412 | 2 450 |
| Tourism related service debits(c) | -1 791 | -1 808 | -1 935 | -1 818 | -1 833 | -1 900 | -1 902 | -1 911 | -1 954 | -1 919 |

TREND ESTIMATES

| | | | | | | | | | | |
|------------------------------------|---------------|---------------|---------------|---------------|---------------|---------------|---------------|---------------|---------------|---------------|
| Services credits | 3 588 | 3 617 | 3 646 | 3 675 | 3 704 | 3 732 | 3 757 | 3 778 | 3 797 | 3 809 |
| Transportation services | 693 | 694 | 695 | 698 | 702 | 707 | 711 | 715 | 718 | 720 |
| Freight | 54 | 54 | 54 | 54 | 54 | 54 | 54 | 53 | 53 | 53 |
| Passenger and other | 639 | 640 | 641 | 644 | 648 | 653 | 657 | 661 | 665 | 667 |
| Travel services | 1 942 | 1 960 | 1 977 | 1 994 | 2 012 | 2 031 | 2 049 | 2 067 | 2 082 | 2 094 |
| Other services | 953 | 964 | 974 | 983 | 990 | 994 | 996 | 997 | 997 | 996 |
| Services debits | -3 518 | -3 528 | -3 545 | -3 571 | -3 602 | -3 633 | -3 661 | -3 684 | -3 703 | -3 718 |
| Transportation services | -1 218 | -1 216 | -1 223 | -1 239 | -1 261 | -1 282 | -1 299 | -1 312 | -1 322 | -1 330 |
| Freight | -651 | -644 | -645 | -653 | -665 | -675 | -682 | -686 | -687 | -687 |
| Passenger and other | -567 | -571 | -577 | -586 | -596 | -607 | -617 | -627 | -635 | -643 |
| Travel services | -1 302 | -1 307 | -1 309 | -1 310 | -1 312 | -1 316 | -1 323 | -1 331 | -1 339 | -1 347 |
| Other services | -997 | -1 005 | -1 013 | -1 022 | -1 029 | -1 035 | -1 039 | -1 041 | -1 042 | -1 041 |
| Memorandum items: | | | | | | | | | | |
| Tourism related service credits(c) | 2 280 | 2 296 | 2 313 | 2 331 | 2 352 | 2 374 | 2 395 | 2 414 | 2 429 | 2 441 |
| Tourism related service debits(c) | -1 792 | -1 802 | -1 814 | -1 831 | -1 853 | -1 876 | -1 898 | -1 917 | -1 931 | -1 942 |

(a) For sign conventions, see paragraph 9 of the Explanatory Notes.

(b) In using these seasonally adjusted series, care should be exercised because of the difficulties associated with reliably estimating the seasonal pattern.

(c) For a more detailed explanation of tourism related services, see paragraphs 15 and 16 of the Explanatory Notes.

| | CREDITS | | | | DEBITS | | | |
|---|---------------|---------------|---------------|---------------|----------------|----------------|----------------|----------------|
| | Mar Qtr | Jun Qtr | Sep Qtr | Dec Qtr | Mar Qtr | Jun Qtr | Sep Qtr | Dec Qtr |
| | 2006 | 2006 | 2006 | 2006 | 2006 | 2006 | 2006 | 2006 |
| | \$m | \$m | \$m | \$m | \$m | \$m | \$m | \$m |
| Services | 10 717 | 10 452 | 11 107 | 11 532 | -10 003 | -10 352 | -11 158 | -11 292 |
| Transportation services | 2 126 | 1 963 | 2 091 | 2 214 | -3 520 | -3 617 | -3 854 | -4 055 |
| Passenger(c) | 1 978 | 1 794 | 1 930 | 2 052 | -1 349 | -1 544 | -1 683 | -1 680 |
| Freight | 148 | 169 | 161 | 162 | -1 964 | -1 885 | -1 966 | -2 168 |
| Other(c) | np | np | np | np | -207 | -188 | -205 | -207 |
| Travel services | 5 873 | 5 596 | 6 079 | 6 223 | -3 590 | -3 782 | -4 237 | -3 986 |
| Business | 537 | 540 | 615 | 583 | -674 | -644 | -678 | -650 |
| Personal | 5 336 | 5 056 | 5 464 | 5 640 | -2 916 | -3 138 | -3 559 | -3 336 |
| Education-related | 2 439 | 2 660 | 2 899 | 2 526 | -194 | -154 | -265 | -154 |
| Other | 2 897 | 2 396 | 2 565 | 3 114 | -2 722 | -2 984 | -3 294 | -3 182 |
| Communication services(d) | 211 | 193 | 257 | 210 | -205 | -202 | -251 | -214 |
| Construction services | 34 | 31 | 31 | 35 | — | — | — | — |
| Insurance services | 176 | 176 | 176 | 176 | -225 | -225 | -225 | -225 |
| Financial services | 251 | 251 | 251 | 251 | -150 | -150 | -150 | -150 |
| Computer and information services | 287 | 320 | 348 | 388 | -247 | -285 | -331 | -360 |
| Royalties and license fees | 178 | 219 | 208 | 247 | -657 | -679 | -744 | -830 |
| Other business services | 1 150 | 1 320 | 1 300 | 1 417 | -833 | -934 | -948 | -1 052 |
| Merchanting and other trade-related | 174 | 204 | 180 | 196 | -40 | -40 | -59 | -63 |
| Operational leasing | 9 | 10 | 10 | 7 | -211 | -199 | -212 | -210 |
| Miscellaneous business, professional and technical | 967 | 1 106 | 1 110 | 1 214 | -582 | -695 | -677 | -779 |
| Legal, accounting, management consulting and public relations | 162 | 179 | 193 | 206 | -58 | -98 | -83 | -84 |
| Advertising, market research and public opinion polling | 56 | 67 | 56 | 64 | -42 | -76 | -39 | -53 |
| Research and development | 86 | 104 | 127 | 140 | -51 | -44 | -38 | -51 |
| Architectural, engineering and other technical services | 305 | 322 | 293 | 334 | -112 | -120 | -135 | -135 |
| Agriculture, mining and on-site processing | 51 | 69 | 82 | 77 | -35 | -52 | -34 | -23 |
| Services between affiliated enterprises n.i.e. | 217 | 265 | 237 | 265 | -170 | -193 | -225 | -299 |
| Other | 90 | 100 | 122 | 128 | -114 | -112 | -123 | -134 |
| Personal, cultural, and recreational services | 211 | 155 | 152 | 170 | -385 | -252 | -226 | -207 |
| Audiovisual and related services | 94 | 34 | 36 | 47 | -309 | -212 | -191 | -165 |
| Personal, cultural and recreational services | 117 | 121 | 116 | 123 | -76 | -40 | -35 | -42 |
| Government services n.i.e. | 220 | 228 | 214 | 201 | -191 | -226 | -192 | -213 |
| Memorandum items: | | | | | | | | |
| Tourism related services(e) | 6 977 | 6 465 | 7 069 | 7 350 | -5 034 | -5 398 | -6 014 | -5 758 |

— nil or rounded to zero (including null cells)

np not available for publication but included in totals where applicable, unless otherwise indicated

(a) For sign conventions, see paragraph 9 of the Explanatory Notes.

(b) For more information see paragraphs 13 and 14 of the Explanatory Notes.

(c) Passenger transportation credits include other transportation services credits.

(d) Communications services includes other services n.i.e.

(e) For a more detailed explanation of tourism related services, see paragraphs 15 and 16 of the Explanatory Notes.

| | | | | Per cent of total merchandise exports(a) | 7 MONTHS ENDED JANUARY | |
|------------------------------------|-------|-------|-------|---|---------------------------|--------|
| | Nov | Dec | Jan | | 2006 | 2007 |
| | 2006 | 2006 | 2007 | | | |
| | \$m | \$m | \$m | % | \$m | \$m |
| MAJOR COMMODITIES | | | | | | |
| 011 Meat of bovine animals | 474 | 463 | 264 | 2.1 | 2 546 | 2 932 |
| 041 Wheat | 228 | 203 | 204 | 1.6 | 1 803 | 1 881 |
| 268 Wool and other animal hair | 220 | 246 | 149 | 1.2 | 1 245 | 1 383 |
| 281 Iron ore and concentrates | 1 268 | 1 324 | 1 292 | 10.2 | 7 249 | 9 232 |
| 285 Aluminium ore and concentrates | 548 | 488 | 475 | 3.7 | 2 890 | 3 699 |
| 321 Coal, not agglomerated | 1 777 | 1 814 | 2 021 | 15.9 | 14 376 | 13 265 |
| 333 Crude petroleum oils | 466 | 762 | 603 | 4.8 | 3 746 | 4 682 |
| 334 Refined petroleum oils | 293 | 208 | 214 | 1.7 | 1 813 | 1 750 |
| 343 Natural gas | 452 | 510 | 426 | 3.4 | 2 435 | 3 194 |
| 684 Aluminium | 492 | 574 | 492 | 3.9 | 2 800 | 3 573 |
| 781 Passenger motor vehicles | 249 | 273 | 85 | 0.7 | 1 841 | 1 542 |
| 971 Gold, non-monetary | 652 | 868 | 803 | 6.3 | 3 586 | 5 742 |

SECTION AND DIVISION OF THE SITC

| | | | | | | |
|----|---|--------------|--------------|--------------|-------------|----------------------|
| 0 | Food and live animals(b) | | | | | |
| 00 | Live animals other than fish, crustaceans, molluscs and aquatic invertebrates | 81 | 82 | 84 | 0.7 | 509 573 |
| 01 | Meat and meat preparations | 695 | 665 | 420 | 3.3 | 3 785 4 248 |
| 02 | Dairy products and birds' eggs | 230 | 195 | 181 | 1.4 | 1 475 1 425 |
| 03 | Fish (not marine mammals), crustaceans, molluscs and aquatic invertebrates, and preparations thereof(b) | 75 | 120 | 100 | 0.8 | 739 699 |
| 04 | Cereals and cereal preparations(b) | 322 | 309 | 314 | 2.5 | 2 588 2 763 |
| 05 | Vegetables and fruit | 131 | 122 | 95 | 0.7 | 790 859 |
| 06 | Sugars, sugar preparations and honey(b) | 23 | 20 | 17 | 0.1 | 150 167 |
| 07 | Coffee, tea, cocoa, spices, and manufactures thereof | 17 | 22 | 18 | 0.1 | 142 140 |
| 08 | Feeding stuff for animals (excl. unmilled cereals)(b) | 66 | 63 | 55 | 0.4 | 486 455 |
| 09 | Miscellaneous edible products and preparations | 40 | 35 | 31 | 0.2 | 260 261 |
| | <i>Total Food and live animals</i> | <i>1 680</i> | <i>1 634</i> | <i>1 315</i> | <i>10.4</i> | <i>10 923 11 590</i> |
| 1 | Beverages and tobacco | | | | | |
| 11 | Beverages | 262 | 269 | 190 | 1.5 | 1 725 1 728 |
| 12 | Tobacco and tobacco manufactures | 12 | 9 | 12 | 0.1 | 52 86 |
| | <i>Total Beverages and tobacco</i> | <i>274</i> | <i>278</i> | <i>202</i> | <i>1.6</i> | <i>1 777 1 815</i> |
| 2 | Crude materials, inedible, except fuels(b) | | | | | |
| 21 | Hides, skins and furskins, raw(b) | 64 | 71 | 51 | 0.4 | 337 407 |
| 22 | Oil seeds and oleaginous fruits | 6 | 16 | 17 | 0.1 | 195 104 |
| 23 | Crude rubber (incl. synthetic and reclaimed) | — | — | — | — | 4 2 |
| 24 | Cork and wood | 104 | 114 | 73 | 0.6 | 598 676 |
| 25 | Pulp and waste paper | 15 | 17 | 15 | 0.1 | 87 102 |
| 26 | Textile fibres and their wastes (not manufactured into yarn or fabric)(b) | 311 | 312 | 187 | 1.5 | 2 009 1 998 |
| 27 | Crude fertilisers (excl. those of Division 56) and crude minerals (excl. coal, petroleum and precious stones) | 59 | 44 | 46 | 0.4 | 295 323 |
| 28 | Metalliferous ores and metal scrap(b) | 2 830 | 3 168 | 2 629 | 20.7 | 15 118 20 303 |
| 29 | Crude animal and vegetable materials, n.e.s. | 18 | 18 | 13 | 0.1 | 159 122 |
| | <i>Total Crude materials, inedible, except fuels</i> | <i>3 408</i> | <i>3 760</i> | <i>3 032</i> | <i>23.9</i> | <i>18 801 24 036</i> |
| 3 | Mineral fuels, lubricants and related materials | | | | | |
| 32 | Coal, coke and briquettes | 1 778 | 1 826 | 2 031 | 16.0 | 14 409 13 303 |
| 33 | Petroleum, petroleum products and related materials | 761 | 973 | 819 | 6.5 | 5 569 6 443 |
| 34 | Gas, natural and manufactured | 537 | 578 | 498 | 3.9 | 3 040 3 832 |
| | <i>Total Mineral fuels, lubricants and related materials</i> | <i>3 076</i> | <i>3 377</i> | <i>3 347</i> | <i>26.4</i> | <i>23 018 23 579</i> |

— nil or rounded to zero (including null cells)

(b) Excludes exports commodities subject to a confidentiality restriction. These are included in Division 98.

(a) Per cent of total merchandise exports is calculated for the most recent month.

| | | | | | Per cent of total merchandise exports(a) | 7 MONTHS ENDED JANUARY | | | | |
|----------------------------------|---|--|--|--|---|------------------------------------|-------------|------|-------|--------|
| | | | | | Nov 2006 | Dec 2006 | Jan 2007 | | 2006 | 2007 |
| | | | | | \$m | \$m | \$m | % | \$m | \$m |
| SECTION AND DIVISION OF THE SITC | | | | | | | | | | |
| 4 | Animal and vegetable oils, fats and waxes(b) | | | | | | | | | |
| 41 | Animal oils and fats | | | | 19 | 17 | 16 | 0.1 | 121 | 127 |
| 42 | Fixed vegetable fats and oils, crude, refined or fractionated(b) | | | | 4 | 9 | 4 | — | 33 | 39 |
| 43 | Fats and oils (processed), waxes and inedible mixtures or preparations, of animal or vegetable origin, n.e.s. | | | | 5 | 5 | 6 | — | 32 | 37 |
| | Total Animal and vegetable oils, fats and waxes | | | | 28 | 31 | 25 | 0.2 | 185 | 202 |
| 5 | Chemicals and related products, n.e.s.(b) | | | | | | | | | |
| 51 | Organic chemicals(b) | | | | 8 | 11 | 7 | 0.1 | 64 | 69 |
| 52 | Inorganic chemicals(b) | | | | 69 | 60 | 62 | 0.5 | 287 | 424 |
| 53 | Dyeing, tanning and colouring materials | | | | 49 | 53 | 42 | 0.3 | 365 | 358 |
| 54 | Medicinal and pharmaceutical products | | | | 354 | 268 | 275 | 2.2 | 1 968 | 2 128 |
| 55 | Essential oils and resinoids and perfume materials; toilet, polishing and cleansing preparations | | | | 46 | 40 | 33 | 0.3 | 273 | 287 |
| 56 | Fertilisers (excl. crude) | | | | 16 | 5 | 11 | 0.1 | 126 | 104 |
| 57 | Plastics in primary forms(b) | | | | 31 | 36 | 30 | 0.2 | 176 | 192 |
| 58 | Plastics in non-primary forms | | | | 33 | 31 | 23 | 0.2 | 191 | 213 |
| 59 | Chemical materials and products, n.e.s. | | | | 67 | 64 | 57 | 0.5 | 401 | 454 |
| | Total Chemicals and related products, n.e.s. | | | | 674 | 567 | 539 | 4.3 | 3 852 | 4 229 |
| 6 | Manufactured goods classified chiefly by material(b) | | | | | | | | | |
| 61 | Leather, leather manufactures, and dressed furskins, n.e.s. | | | | 30 | 39 | 25 | 0.2 | 223 | 238 |
| 62 | Rubber manufactures, n.e.s. | | | | 17 | 20 | 11 | 0.1 | 96 | 119 |
| 63 | Cork and wood manufactures (excl. furniture)(b) | | | | 13 | 14 | 15 | 0.1 | 125 | 105 |
| 64 | Paper, paperboard, and articles of paper pulp, of paper or of paperboard | | | | 58 | 52 | 55 | 0.4 | 388 | 411 |
| 65 | Textile yarn, fabrics, made-up articles, nes, and related products | | | | 35 | 36 | 20 | 0.2 | 252 | 239 |
| 66 | Non-metallic mineral manufactures, n.e.s.(b) | | | | 93 | 72 | 53 | 0.4 | 517 | 538 |
| 67 | Iron and steel(b) | | | | 84 | 126 | 75 | 0.6 | 457 | 588 |
| 68 | Non-ferrous metals | | | | 1 107 | 1 161 | 1 195 | 9.4 | 5 302 | 7 765 |
| 69 | Manufactures of metals, n.e.s. | | | | 101 | 91 | 72 | 0.6 | 511 | 586 |
| | Total Manufactured goods classified chiefly by material | | | | 1 538 | 1 611 | 1 522 | 12.0 | 7 869 | 10 589 |
| 7 | Machinery and transport equipment(b) | | | | | | | | | |
| 71 | Power generating machinery and equipment | | | | 99 | 132 | 49 | 0.4 | 706 | 727 |
| 72 | Machinery specialised for particular industries | | | | 113 | 139 | 108 | 0.9 | 864 | 891 |
| 73 | Metal working machinery | | | | 13 | 17 | 9 | 0.1 | 108 | 98 |
| 74 | General industrial machinery and equipment, n.e.s. and machine parts, n.e.s.(b) | | | | 124 | 138 | 97 | 0.8 | 909 | 924 |
| 75 | Office machines and automatic data processing machines | | | | 106 | 106 | 91 | 0.7 | 672 | 680 |
| 76 | Telecommunications and sound recording and reproducing apparatus and equipment | | | | 67 | 77 | 44 | 0.3 | 475 | 504 |
| 77 | Electrical machinery, apparatus, appliances, parts (incl. non-electrical counterparts of electrical domestic equipment) | | | | 153 | 141 | 106 | 0.8 | 891 | 1 003 |
| 78 | Road vehicles (incl. air-cushion vehicles) | | | | 334 | 373 | 140 | 1.1 | 2 507 | 2 104 |
| 79 | Transport equipment (excl. road vehicles) | | | | 79 | 84 | 42 | 0.3 | 595 | 508 |
| | Total Machinery and transport equipment | | | | 1 087 | 1 207 | 686 | 5.4 | 7 727 | 7 440 |

— nil or rounded to zero (including null cells)

(a) Per cent of total merchandise exports is calculated for the most recent month.

(b) Excludes exports commodities subject to a confidentiality restriction. These are included in Division 98.

| | | | | | 7 MONTHS ENDED JANUARY | | | | | |
|--|---|---------------|---------------|---------------|------------------------------------|---------------|---------------|---|------|------|
| | | | | | Nov 2006 | Dec 2006 | Jan 2007 | Per cent of total merchandise exports(a) | 2006 | 2007 |
| | | | | | \$m | \$m | \$m | % | \$m | \$m |
| | | | | | | | | | | |
| SECTION AND DIVISION OF THE SITC | | | | | | | | | | |
| 8 | Miscellaneous manufactured articles(b) | | | | | | | | | |
| 81 | Prefabricated buildings; sanitary, plumbing, heating and lighting fixtures and fittings, n.e.s. | 8 | 8 | 7 | 0.1 | 67 | 67 | | | |
| 82 | Furniture, parts thereof; bedding, mattresses, mattress supports, cushions and similar stuffed furnishings | 13 | 11 | 5 | — | 76 | 80 | | | |
| 83 | Travel goods, handbags and similar containers | 3 | 3 | 2 | — | 14 | 17 | | | |
| 84 | Articles of apparel and clothing accessories | 20 | 17 | 13 | 0.1 | 145 | 140 | | | |
| 85 | Footwear(b) | 5 | 3 | 2 | — | 24 | 24 | | | |
| 87 | Professional, scientific and controlling instruments and apparatus, n.e.s. | 158 | 160 | 113 | 0.9 | 901 | 1 008 | | | |
| 88 | Photographic apparatus, equipment and supplies and optical goods, n.e.s.; watches and clocks | 31 | 28 | 24 | 0.2 | 198 | 206 | | | |
| 89 | Miscellaneous manufactured articles, n.e.s. | 199 | 195 | 164 | 1.3 | 1 247 | 1 342 | | | |
| | <i>Total Miscellaneous manufactured articles</i> | 438 | 426 | 330 | 2.6 | 2 671 | 2 885 | | | |
| 9 | Commodities and transactions not classified elsewhere in the SITC(c) | | | | | | | | | |
| 93 | Special transactions and commodities not classified according to kind | 140 | 91 | 102 | 0.8 | 1 264 | 776 | | | |
| 95 | Gold coin whether or not legal tender, and other coin being legal tender | 15 | 24 | 22 | 0.2 | 73 | 109 | | | |
| 96 | Coin (excl. gold coin), not being legal tender | — | — | — | — | 1 | — | | | |
| 97 | Gold, non-monetary (excl. gold ores and concentrates) | 652 | 868 | 803 | 6.3 | 3 586 | 5 742 | | | |
| 98 | Combined confidential items excl. some of SITC 280 (exports only) and some of SITCs 510 and 520 (imports only)(c) | 907 | 668 | 753 | 5.9 | 3 651 | 5 337 | | | |
| | <i>Total commodities and transactions not classified elsewhere in the SITC</i> | 1 714 | 1 650 | 1 680 | 13.2 | 8 576 | 11 964 | | | |
| Total merchandise exports | | 13 917 | 14 540 | 12 678 | 100.0 | 85 400 | 98 329 | | | |
| Balance of Payments Adjustments | | 120 | 224 | 97 | . . | 891 | 1 080 | | | |
| Goods Credits (exports) on a Balance of Payments Basis | | 14 037 | 14 764 | 12 775 | . . | 86 291 | 99 409 | | | |

.. not applicable

— nil or rounded to zero (including null cells)

(a) Per cent of total merchandise exports is calculated for the most recent month.

(b) Excludes exports commodities subject to a confidentiality restriction. These are included in Division 98.

(c) Includes exports commodities subject to a confidentiality restriction.

| | | Nov 2006 | Dec 2006 | Jan 2007 | Per cent of total merchandise imports(a) | 7 MONTHS ENDED JANUARY | |
|----------------------------------|---|-------------|-------------|-------------|---|------------------------------------|--------|
| | | \$m | \$m | \$m | % | \$m | \$m |
| MAJOR COMMODITIES | | | | | | | |
| 333 | Crude petroleum oils | 865 | 1 205 | 1 077 | 7.4 | 6 617 | 7 519 |
| 334 | Refined petroleum oils | 636 | 643 | 447 | 3.1 | 4 212 | 4 366 |
| 542 | Medicaments | 502 | 387 | 532 | 3.6 | 3 502 | 3 694 |
| 641 | Paper and paperboard | 181 | 143 | 180 | 1.2 | 1 221 | 1 239 |
| 752 | Automatic data processing machines | 526 | 554 | 516 | 3.5 | 3 406 | 3 791 |
| 759 | Parts and accessories of office machines | 182 | 173 | 177 | 1.2 | 1 248 | 1 302 |
| 764 | Telecommunications equipment | 612 | 515 | 415 | 2.8 | 3 240 | 3 513 |
| 781 | Passenger motor vehicles | 1 104 | 1 117 | 1 014 | 6.9 | 6 842 | 7 649 |
| 782 | Motor vehicles for the transport of goods | 408 | 426 | 468 | 3.2 | 2 359 | 2 830 |
| 784 | Parts and accessories of motor vehicles | 219 | 186 | 191 | 1.3 | 1 342 | 1 492 |
| 792 | Aircraft and associated equipment | 167 | 325 | 117 | 0.8 | 2 844 | 1 527 |
| 971 | Gold, non-monetary | 324 | 349 | 394 | 2.7 | 2 027 | 2 878 |
| SECTION AND DIVISION OF THE SITC | | | | | | | |
| 0 | Food and live animals | | | | | | |
| 00 | Live animals other than fish, crustaceans, molluscs and aquatic invertebrates | 9 | 9 | 12 | 0.1 | 50 | 68 |
| 01 | Meat and meat preparations | 44 | 46 | 45 | 0.3 | 175 | 248 |
| 02 | Dairy products and birds' eggs | 46 | 38 | 34 | 0.2 | 240 | 259 |
| 03 | Fish (not marine mammals), crustaceans, molluscs and aquatic invertebrates, and preparations thereof | 127 | 125 | 114 | 0.8 | 622 | 746 |
| 04 | Cereals and cereal preparations | 51 | 43 | 38 | 0.3 | 273 | 333 |
| 05 | Vegetables and fruit | 134 | 134 | 127 | 0.9 | 711 | 818 |
| 06 | Sugars, sugar preparations and honey | 19 | 16 | 16 | 0.1 | 118 | 123 |
| 07 | Coffee, tea, cocoa, spices, and manufactures thereof | 81 | 73 | 72 | 0.5 | 456 | 523 |
| 08 | Feeding stuff for animals (excl. unmilled cereals) | 36 | 31 | 57 | 0.4 | 175 | 272 |
| 09 | Miscellaneous edible products and preparations | 149 | 94 | 117 | 0.8 | 697 | 749 |
| | <i>Total food and live animals</i> | 696 | 610 | 632 | 4.3 | 3 517 | 4 138 |
| 1 | Beverages and tobacco | | | | | | |
| 11 | Beverages | 139 | 97 | 87 | 0.6 | 567 | 725 |
| 12 | Tobacco and tobacco manufactures | 17 | 24 | 18 | 0.1 | 116 | 127 |
| | <i>Total beverages and tobacco</i> | 156 | 121 | 104 | 0.7 | 683 | 852 |
| 2 | Crude materials, inedible, except fuels | | | | | | |
| 21 | Hides, skins and furskins, raw | — | — | — | — | 1 | 2 |
| 22 | Oil seeds and oleaginous fruits | 4 | 28 | 6 | — | 29 | 50 |
| 23 | Crude rubber (incl. synthetic and reclaimed) | 20 | 11 | 16 | 0.1 | 92 | 110 |
| 24 | Cork and wood | 47 | 44 | 52 | 0.4 | 324 | 332 |
| 25 | Pulp and waste paper | 17 | 22 | 28 | 0.2 | 134 | 164 |
| 26 | Textile fibres and their wastes (not manufactured into yarn or fabric) | 15 | 11 | 12 | 0.1 | 84 | 90 |
| 27 | Crude fertilisers (excl. those of Division 56) and crude minerals (excl. coal, petroleum and precious stones) | 18 | 16 | 11 | 0.1 | 104 | 94 |
| 28 | Metalliferous ores and metal scrap | 43 | 59 | 33 | 0.2 | 200 | 389 |
| 29 | Crude animal and vegetable materials, n.e.s. | 31 | 29 | 30 | 0.2 | 160 | 179 |
| | <i>Total crude materials, inedible, except fuels</i> | 195 | 220 | 189 | 1.3 | 1 128 | 1 410 |
| 3 | Mineral fuels, lubricants and related materials(b) | | | | | | |
| 32 | Coal, coke and briquettes | 2 | 1 | 2 | — | 17 | 14 |
| 33 | Petroleum, petroleum products and related materials(b) | 1 525 | 1 892 | 1 564 | 10.7 | 11 078 | 12 126 |
| 34 | Gas, natural and manufactured | 81 | 94 | 78 | 0.5 | 114 | 610 |
| | <i>Total mineral fuels, lubricants and related materials</i> | 1 607 | 1 987 | 1 644 | 11.3 | 11 209 | 12 750 |

— nil or rounded to zero (including null cells)

(a) Per cent of total merchandise imports is calculated for the most recent month.

(b) Excludes imports commodities subject to a confidentiality restriction. These are included in Division 98.

| | | | | | 7 MONTHS ENDED JANUARY | |
|----------------------------------|--|-------------|-------------|---|---------------------------|--------|
| | | | | | 2006 | 2007 |
| | | | | | | |
| | Nov 2006 | Dec 2006 | Jan 2007 | Per cent of total merchandise imports(a) | | |
| | \$m | \$m | \$m | % | \$m | \$m |
| SECTION AND DIVISION OF THE SITC | | | | | | |
| 4 | Animal and vegetable oils, fats and waxes | | | | | |
| 41 | Animal oils and fats | 1 | 2 | 2 | — | 11 |
| 42 | Fixed vegetable fats and oils, crude, refined or fractionated | 41 | 33 | 42 | 0.3 | 187 |
| 43 | Fats and oils (processed), waxes and inedible mixtures or preparations, of animal or vegetable origin, n.e.s. | 5 | 5 | 5 | — | 27 |
| | <i>Total animal and vegetable oils, fats and waxes</i> | 47 | 40 | 49 | 0.3 | 226 |
| 5 | Chemicals and related products, n.e.s.(b) | | | | | |
| 51 | Organic chemicals | 382 | 185 | 314 | 2.2 | 1 711 |
| 52 | Inorganic chemicals(b) | 110 | 86 | 103 | 0.7 | 634 |
| 53 | Dyeing, tanning and colouring materials | 56 | 48 | 51 | 0.3 | 328 |
| 54 | Medicinal and pharmaceutical products | 592 | 469 | 638 | 4.4 | 4 246 |
| 55 | Essential oils and resinoids and perfume materials; toilet, polishing and cleansing preparations | 137 | 114 | 127 | 0.9 | 896 |
| 56 | Fertilisers (excl. crude) | 22 | 11 | 54 | 0.4 | 390 |
| 57 | Plastics in primary forms | 148 | 137 | 153 | 1.0 | 801 |
| 58 | Plastics in non-primary forms | 121 | 106 | 109 | 0.7 | 675 |
| 59 | Chemical materials and products, n.e.s. | 160 | 137 | 137 | 0.9 | 929 |
| | <i>Total chemicals and related products, n.e.s.</i> | 1 729 | 1 294 | 1 685 | 11.6 | 10 611 |
| 6 | Manufactured goods classified chiefly by material(b) | | | | | |
| 61 | Leather, leather manufactures, and dressed furskins, n.e.s. | 15 | 13 | 13 | 0.1 | 84 |
| 62 | Rubber manufactures, n.e.s.(b) | 227 | 199 | 211 | 1.4 | 1 113 |
| 63 | Cork and wood manufactures (excl. furniture) | 53 | 51 | 64 | 0.4 | 335 |
| 64 | Paper, paperboard, and articles of paper pulp, of paper or of paperboard(b) | 237 | 197 | 233 | 1.6 | 1 561 |
| 65 | Textile yarn, fabrics, made-up articles n.e.s. and related products | 228 | 182 | 199 | 1.4 | 1 391 |
| 66 | Non-metallic mineral manufactures, n.e.s. | 201 | 177 | 187 | 1.3 | 1 278 |
| 67 | Iron and steel(b) | 356 | 274 | 358 | 2.5 | 1 969 |
| 68 | Non-ferrous metals(b) | 133 | 132 | 218 | 1.5 | 684 |
| 69 | Manufactures of metals, n.e.s.(b) | 430 | 377 | 377 | 2.6 | 2 449 |
| | <i>Total manufactured goods classified chiefly by material</i> | 1 880 | 1 603 | 1 860 | 12.7 | 10 863 |
| 7 | Machinery and transport equipment(b) | | | | | |
| 71 | Power generating machinery and equipment | 408 | 278 | 292 | 2.0 | 1 953 |
| 72 | Machinery specialised for particular industries | 515 | 610 | 595 | 4.1 | 3 791 |
| 73 | Metal working machinery | 62 | 55 | 63 | 0.4 | 579 |
| 74 | General industrial machinery and equipment, n.e.s. and machine parts, n.e.s. | 966 | 848 | 1 010 | 6.9 | 5 136 |
| 75 | Office machines and automatic data processing machines | 774 | 775 | 731 | 5.0 | 4 991 |
| 76 | Telecommunications and sound recording and reproducing apparatus and equipment | 1 096 | 825 | 621 | 4.3 | 5 676 |
| 77 | Electrical machinery, apparatus, appliances, parts (incl. non-electrical counterparts of electrical domestic equipment)(b) | 808 | 708 | 726 | 5.0 | 4 698 |
| 78 | Road vehicles (incl. air-cushion vehicles) | 1 932 | 1 904 | 1 830 | 12.5 | 11 665 |
| 79 | Transport equipment (excl. road vehicles) | 327 | 413 | 229 | 1.6 | 3 602 |
| | <i>Total machinery and transport equipment</i> | 6 888 | 6 416 | 6 097 | 41.8 | 42 091 |

— nil or rounded to zero (including null cells)

(a) Per cent of total merchandise imports is calculated for the most recent month.

(b) Excludes imports commodities subject to a confidentiality restriction. These are included in Division 98.

| | | | | | 7 MONTHS ENDED JANUARY..... | |
|---|---|---------------|---------------|---------------|--------------------------------|-----------------------|
| | | | | | 2006 | 2007 |
| | | | | | \$m | \$m |
| SECTION AND DIVISION OF THE SITC | | | | | | |
| 8 | Miscellaneous manufactured articles(b) | | | | | |
| 81 | Prefabricated buildings; sanitary, plumbing, heating and lighting fixtures and fittings, n.e.s. | 60 | 49 | 50 | 0.3 | 319 388 |
| 82 | Furniture, parts thereof; bedding, mattresses, mattress supports, cushions and similar stuffed furnishings | 233 | 217 | 194 | 1.3 | 1 300 1 487 |
| 83 | Travel goods, handbags and similar containers | 65 | 49 | 50 | 0.3 | 379 392 |
| 84 | Articles of apparel and clothing accessories | 362 | 291 | 426 | 2.9 | 2 561 2 669 |
| 85 | Footwear | 101 | 89 | 122 | 0.8 | 676 753 |
| 87 | Professional, scientific and controlling instruments and apparatus, n.e.s. | 353 | 345 | 316 | 2.2 | 2 194 2 417 |
| 88 | Photographic apparatus, equipment and supplies and optical goods, n.e.s.; watches and clocks(b) | 134 | 117 | 104 | 0.7 | 823 828 |
| 89 | Miscellaneous manufactured articles, n.e.s. | 878 | 747 | 640 | 4.4 | 5 195 5 630 |
| | <i>Total miscellaneous manufactured articles</i> | <i>2 187</i> | <i>1 905</i> | <i>1 904</i> | <i>13.0</i> | <i>13 448 14 564</i> |
| 9 | Commodities and transactions not classified elsewhere in the SITC(c) | | | | | |
| 93 | Special transactions and commodities not classified according to kind | 3 | 5 | 3 | — | 20 23 |
| 95 | Gold coin whether or not legal tender, and other coin being legal tender | — | 1 | 1 | — | 2 3 |
| 96 | Coin (excl. gold coin), not being legal tender | — | — | — | — | — |
| 97 | Gold, non-monetary (excl. gold ores and concentrates) | 324 | 349 | 394 | 2.7 | 2 027 2 878 |
| 98 | Combined confidential items excl. some of SITC 280 (exports only) and some of SITCs 510 and 520 (imports only)(c) | 19 | 18 | 28 | 0.2 | 69 114 |
| | <i>Total commodities and transactions not classified elsewhere in the SITC</i> | <i>346</i> | <i>374</i> | <i>427</i> | <i>2.9</i> | <i>2 118 3 019</i> |
| Total merchandise imports | | 15 731 | 14 570 | 14 591 | 100.0 | 95 892 105 592 |
| Balance of Payments Adjustment | | 214 | 209 | 213 | . . | 1 536 1 719 |
| Goods Debits (imports) on a Balance of Payments Basis | | 15 945 | 14 779 | 14 804 | . . | 97 428 107 311 |

.. not applicable

— nil or rounded to zero (including null cells)

(a) Per cent of total merchandise imports is calculated for the most recent month.

(b) Excludes imports commodities subject to a confidentiality restriction. These are included in Division 98.

(c) Includes imports commodities subject to a confidentiality restriction.

INTERNATIONAL MERCHANDISE TRADE(a), By country and country groups

| | EXPORTS | | | | IMPORTS | | | | BALANCE OF MERCHANDISE TRADE | |
|---------------------------|----------------|-----------------|--------------------------------------|--------------------------------------|----------------|-----------------|--------------------------------------|--------------------------------------|------------------------------------|--------------------------------------|
| | | | | | | | | | | |
| | | | | | | | | | | |
| | 2005-06 | January 2007 | 7 months ended January 2006 | 7 months ended January 2007 | 2005-06 | January 2007 | 7 months ended January 2006 | 7 months ended January 2007 | 2005-06 | 7 months ended January 2007 |
| | \$m | \$m | \$m | \$m | \$m | \$m | \$m | \$m | | |
| Belgium | 1 040 | 122 | 615 | 698 | 1 479 | 155 | 867 | 946 | -438 | -248 |
| Brazil | 947 | 67 | 587 | 523 | 784 | 82 | 472 | 532 | 163 | -9 |
| Canada | 1 698 | 95 | 992 | 949 | 1 993 | 157 | 1 058 | 1 250 | -295 | -302 |
| China | 18 140 | 1 760 | 10 078 | 13 004 | 23 202 | 2 245 | 13 954 | 16 525 | -5 062 | -3 521 |
| Denmark | 200 | 13 | 112 | 117 | 891 | 81 | 521 | 657 | -691 | -540 |
| Egypt(b) | 504 | 30 | 279 | 171 | 16 | 1 | 9 | 10 | 488 | 160 |
| Fiji | 460 | 23 | 257 | 243 | 175 | 8 | 111 | 99 | 285 | 144 |
| Finland | 934 | 35 | 369 | 851 | 818 | 66 | 484 | 467 | 116 | 384 |
| France | 1 184 | 73 | 678 | 749 | 5 347 | 317 | 3 370 | 2 168 | -4 163 | -1 419 |
| Germany | 1 418 | 133 | 847 | 866 | 8 677 | 810 | 5 093 | 5 531 | -7 259 | -4 665 |
| Hong Kong (Sar of China) | 2 897 | 263 | 1 559 | 1 856 | 1 651 | 126 | 954 | 914 | 1 246 | 942 |
| India | 7 382 | 914 | 4 145 | 5 921 | 1 240 | 129 | 722 | 798 | 6 142 | 5 122 |
| Indonesia | 3 982 | 294 | 2 236 | 2 640 | 4 553 | 577 | 2 433 | 2 608 | -572 | 32 |
| Iran | 348 | 29 | 116 | 113 | 37 | 4 | 23 | 27 | 311 | 86 |
| Iraq | 171 | — | 167 | 94 | — | — | — | 36 | 171 | 59 |
| Ireland | 157 | 12 | 95 | 100 | 1 852 | 181 | 1 143 | 1 161 | -1 695 | -1 061 |
| Israel | 158 | 10 | 95 | 106 | 615 | 66 | 333 | 372 | -456 | -266 |
| Italy | 1 559 | 124 | 843 | 1 090 | 4 186 | 410 | 2 497 | 2 884 | -2 627 | -1 794 |
| Japan | 31 082 | 2 623 | 17 831 | 19 484 | 17 334 | 1 364 | 9 877 | 10 092 | 13 749 | 9 391 |
| Korea, Republic of | 11 753 | 1 216 | 6 782 | 7 787 | 6 484 | 460 | 3 264 | 3 627 | 5 269 | 4 160 |
| Kuwait | 515 | 17 | 297 | 290 | 242 | 15 | 136 | 119 | 273 | 171 |
| Malaysia | 2 535 | 232 | 1 422 | 1 752 | 6 751 | 470 | 3 730 | 3 605 | -4 216 | -1 853 |
| Mexico | 835 | 74 | 507 | 538 | 938 | 96 | 529 | 654 | -102 | -116 |
| Netherlands | 2 579 | 265 | 1 365 | 1 744 | 1 314 | 126 | 792 | 876 | 1 265 | 868 |
| New Zealand | 8 747 | 618 | 5 296 | 5 545 | 5 481 | 370 | 3 176 | 3 204 | 3 266 | 2 341 |
| Pakistan | 318 | 29 | 220 | 195 | 147 | 14 | 82 | 86 | 171 | 110 |
| Papua New Guinea | 1 396 | 70 | 721 | 834 | 2 318 | 203 | 1 329 | 1 309 | -922 | -475 |
| Philippines | 878 | 55 | 528 | 627 | 806 | 37 | 463 | 410 | 72 | 217 |
| Saudi Arabia | 2 179 | 102 | 1 175 | 1 181 | 1 209 | 16 | 660 | 481 | 970 | 700 |
| Singapore | 4 203 | 290 | 2 533 | 2 888 | 10 538 | 773 | 5 646 | 5 837 | -6 335 | -2 949 |
| South Africa | 2 208 | 195 | 1 245 | 1 313 | 1 618 | 85 | 942 | 872 | 589 | 442 |
| Spain | 892 | 79 | 466 | 767 | 1 317 | 146 | 770 | 882 | -426 | -115 |
| Sweden | 422 | 17 | 288 | 226 | 2 395 | 182 | 1 268 | 1 321 | -1 973 | -1 095 |
| Switzerland | 260 | 151 | 161 | 387 | 1 571 | 156 | 905 | 1 176 | -1 311 | -789 |
| Taiwan | 5 909 | 442 | 3 306 | 3 628 | 3 811 | 358 | 2 215 | 2 581 | 2 098 | 1 047 |
| Thailand | 4 230 | 345 | 2 216 | 2 347 | 5 388 | 579 | 3 003 | 4 053 | -1 158 | -1 706 |
| Turkey | 385 | 38 | 228 | 272 | 354 | 36 | 202 | 265 | 31 | 6 |
| United Arab Emirates | 1 647 | 184 | 779 | 1 150 | 667 | 203 | 289 | 1 059 | 980 | 91 |
| United Kingdom | 7 792 | 330 | 3 814 | 3 744 | 5 968 | 571 | 3 699 | 4 099 | 1 824 | -355 |
| United States of America | 9 785 | 636 | 5 336 | 5 678 | 22 762 | 1 902 | 13 023 | 14 434 | -12 977 | -8 755 |
| Viet Nam | 915 | 107 | 373 | 1 098 | 4 134 | 370 | 2 184 | 3 034 | -3 220 | -1 937 |
| Other Countries | 7 849 | 569 | 4 440 | 4 765 | 6 440 | 642 | 3 665 | 4 532 | 1 408 | 233 |
| Total | 152 492 | 12 678 | 85 400 | 98 329 | 167 503 | 14 591 | 95 892 | 105 592 | -15 011 | -7 264 |
| APEC | 109 798 | 9 184 | 62 109 | 71 235 | 120 080 | 10 289 | 67 883 | 75 456 | -10 282 | -4 221 |
| ASEAN | 16 869 | 1 329 | 9 381 | 11 428 | 33 242 | 2 930 | 18 018 | 20 267 | -16 374 | -8 839 |
| Developing Countries | 75 895 | 6 838 | 42 537 | 51 132 | 77 265 | 7 004 | 43 377 | 50 013 | -1 370 | 1 119 |
| Least Developed Countries | 1 537 | 101 | 926 | 940 | 341 | 23 | 188 | 154 | 1 197 | 786 |
| European Union(c) | 18 693 | 1 231 | 9 763 | 11 168 | 36 259 | 3 234 | 21 746 | 22 386 | -17 566 | -11 218 |
| OECD | 83 166 | 6 678 | 46 897 | 51 822 | 93 778 | 7 826 | 54 111 | 57 469 | -10 613 | -5 647 |

— nil or rounded to zero (including null cells)

(a) See Time series spreadsheets for details of all countries.

(b) Exports of Alumina to Egypt are excluded from country total and included in the 'Other Countries' category.

(c) From July 2004, European Union includes 25 member countries.

| | 7 MONTHS ENDED JANUARY | | | |
|--|---------------------------|---------------|---------------|----------------|
| | January | | | |
| | 2005-06 | 2007 | 2006 | 2007 |
| | \$m | \$m | \$m | \$m |
| EXPORTS (a) | | | | |
| New South Wales | 26 840 | 2 253 | 15 173 | 16 580 |
| Victoria | 18 929 | 1 328 | 10 622 | 11 820 |
| Queensland | 35 385 | 2 783 | 20 193 | 21 207 |
| South Australia | 9 026 | 582 | 5 059 | 4 988 |
| Western Australia | 47 939 | 4 660 | 26 728 | 34 919 |
| Tasmania | 2 893 | 323 | 1 574 | 2 121 |
| Northern Territory | 2 644 | 279 | 1 370 | 2 462 |
| Australian Capital Territory | 9 | — | 7 | 6 |
| State not available for publication(b) | 710 | 50 | 393 | 471 |
| Re-exports | 8 118 | 420 | 4 282 | 3 756 |
| Total exports | 152 492 | 12 678 | 85 400 | 98 329 |
| IMPORTS | | | | |
| New South Wales | 64 885 | 5 470 | 37 335 | 41 164 |
| Victoria | 49 010 | 4 066 | 29 309 | 30 081 |
| Queensland | 24 863 | 2 155 | 14 143 | 15 888 |
| South Australia | 6 243 | 604 | 3 710 | 3 823 |
| Western Australia | 19 095 | 2 019 | 9 582 | 12 432 |
| Tasmania | 516 | 48 | 312 | 395 |
| Northern Territory | 2 888 | 229 | 1 499 | 1 602 |
| Australian Capital Territory | 4 | — | 3 | 208 |
| Total imports | 167 503 | 14 591 | 95 892 | 105 592 |

— nil or rounded to zero (including null cells)

(a) State in which the final stage of production or manufacture occurs.

(b) Exports of Alumina to Bahrain, Egypt and Iceland are excluded from the state totals and included in 'State not available for publication category'.

PERIOD AVERAGE EXCHANGE RATES (a): Per Australian dollar

| <i>Period</i> | <i>United States dollar</i> | <i>UK pound sterling</i> | <i>Euro</i> | <i>Japanese yen</i> | <i>Trade-weighted index of value of the \$A(b)</i> |
|----------------|-------------------------------------|----------------------------------|-------------|-------------------------|--|
| FINANCIAL YEAR | | | | | |
| 2003-04 | 0.7137 | 0.4102 | 0.5981 | 78.91 | 61.49 |
| 2004-05 | 0.7529 | 0.4052 | 0.5918 | 80.45 | 62.73 |
| 2005-06 | 0.7474 | 0.4205 | 0.6143 | 85.90 | 63.26 |
| MONTHS | | | | | |
| 2005 | | | | | |
| November | 0.7355 | 0.4236 | 0.6234 | 87.04 | 63.40 |
| December | 0.7430 | 0.4252 | 0.6265 | 88.20 | 63.70 |
| 2006 | | | | | |
| January | 0.7498 | 0.4248 | 0.6189 | 86.55 | 63.30 |
| February | 0.7416 | 0.4239 | 0.6203 | 87.42 | 62.90 |
| March | 0.7277 | 0.4170 | 0.6053 | 85.35 | 61.80 |
| April | 0.7350 | 0.4165 | 0.5993 | 86.09 | 62.00 |
| May | 0.7633 | 0.4089 | 0.5982 | 85.33 | 63.20 |
| June | 0.7402 | 0.4012 | 0.5842 | 84.80 | 62.00 |
| July | 0.7514 | 0.4075 | 0.5920 | 86.89 | 63.00 |
| August | 0.7630 | 0.4034 | 0.5958 | 88.45 | 63.70 |
| September | 0.7566 | 0.4009 | 0.5938 | 88.58 | 63.20 |
| October | 0.7539 | 0.4021 | 0.5975 | 89.46 | 63.20 |
| November | 0.7721 | 0.4040 | 0.5995 | 90.52 | 64.00 |
| December | 0.7861 | 0.4002 | 0.5949 | 92.05 | 64.40 |
| 2007 | | | | | |
| January | 0.7839 | 0.4002 | 0.6027 | 94.28 | 64.70 |

- (a) These exchange rates and the trade-weighted index are derived using rates provided by the Reserve Bank of Australia in respect of each trading day.
- (b) May 1970 = 100. The Trade-weighted index is reweighted annually on 1 October and on special occasions as required.

EXPLANATORY NOTES

INTRODUCTION

1 This publication presents preliminary estimates of Australia's international trade in goods and services on a balance of payments basis and merchandise import and export statistics on a recorded trade basis.

2 Merchandise trade statistics on a recorded trade basis are compiled from information submitted by exporters and importers or their agents to the Australian Customs Service (ACS). Adjustments for coverage, timing and valuation are made to recorded trade data to convert them to a balance of payments basis. The main source for services data is the quarterly Survey of International Trade in Services.

3 More comprehensive quarterly estimates of Australia's trade in goods and services, together with comprehensive details of Australia's balance of payments are included in the quarterly publication, *Balance of Payments and International Investment Position, Australia* (cat. no. 5302.0). Detailed monthly statistics on merchandise trade are available on Time Series Spreadsheets or by subscription to tailored services.

CONCEPTS, SOURCES AND METHODS

4 The conceptual framework used in compiling Australia's merchandise trade statistics can be found in *International Merchandise Trade, Australia: Concepts, Sources and Methods, 2001* (cat. no. 5489.0).

5 The conceptual framework used in compiling Australia's balance of payments statistics is based on the Fifth Edition of the International Monetary Fund's *Balance of Payments Manual* (BPM5, 1993). Descriptions of the underlying concepts and structure of the balance of payments and the sources, methods and terms used in compiling the estimates are presented in *Balance of Payments and International Investment Position, Australia: Concepts, Sources and Methods, 1998* (cat. no. 5331.0). To bring merchandise trade statistics on a recorded trade basis to a balance of payments basis, timing adjustments are made to ensure that the transaction is recorded in the period in which ownership changed, rather than in the period in which the transaction was recorded by ACS. Adjustments are also made to imports to take account of distortions which arise when significant changes occur in the volume of import entries lodged but not yet processed by ACS in a given month. Chapter 6 of cat. no. 5331.0 provides more detail on the relationship between statistics on international merchandise trade on a recorded trade basis and on a balance of payments basis.

6 Both of the Concepts, Sources and Methods publications are available to download for free from the ABS website. Select *Methods, Classifications, Concepts & Standards*, then choose *ABS concepts, classifications and statistical standards* and then the catalogue numbers as above.

SEASONAL ADJUSTMENT

7 Monthly original estimates are volatile, being subject to calendar-related and large irregular influences. Seasonally adjusted estimates are derived by estimating and removing systematic calendar related effects, such as seasonal and trading day influences, from the original series. Trading day effects are removed from the original estimates prior to the seasonal adjustment process. Seasonal adjustment does not aim to remove the irregular or non-seasonal influences which may be present in any particular month. These irregular influences may reflect both random economic events and difficulties of statistical recording. The estimates of international trade in goods and services on a balance of payments basis are seasonally adjusted. The merchandise exports and imports statistics on a recorded trade basis are not.

TREND ESTIMATES

8 The month-to-month movements of the seasonally adjusted estimates may not be reliable indicators of trend behaviour because they include irregular or non-seasonal movements. Trend estimates are derived by applying a 13-term Henderson moving average to the seasonally adjusted series. The use of a 13-term Henderson average can result in revisions to the estimates for the most recent six months as additional

EXPLANATORY NOTES *continued*

TREND ESTIMATES *continued*

observations become available. Revisions can also occur because of changes in the original data and as a result of the annual re-estimation of the seasonal factors.

SIGN CONVENTION

9 In keeping with balance of payments conventions, where statistics are on a balance of payments basis, credit entries (exports) are shown without sign and debit items (imports) are shown as negative entries. For statistics on a recorded trade basis, both imports and exports are shown without sign. The calculation of percentage changes on balance of payments debit items are made without regard to sign. References to balance of payments debit items in Key Figures, Key Points, and Analysis and Comments are also made without regard to sign.

COMMODITY BREAKDOWNS OF GOODS

10 For details of the classification used for goods exports on a balance of payments basis (credits), see table 6.6 in *Balance of Payments and International Investment Position, Australia: Concepts, Sources and Methods, 1998* (cat. no. 5331.0).

11 Details of the classification of goods imports on a balance of payments basis (debits) are provided in table 6.7 in cat. no. 5331.0. Goods debits sub groups at a more detailed level than shown in Table 4 are available from the Time series spreadsheets.

12 The recorded trade statistics shown in tables 12 and 13 are classified by the Standard International Trade Classification (SITC). The first section of tables 12 and 13 show the most significant commodities (by value) at the SITC 3 digit level.

COMMODITY BREAKDOWNS OF SERVICES

13 The quarterly detailed services data published in table 11 are consistent with the monthly aggregates shown in table 9.

14 Monthly indicators for many of the services components that are only surveyed quarterly are not available. In particular, the Freight and Other transportation components of Total services credits are not available for publication on a monthly basis. The estimates for these items shown in table 9 are therefore derived by dividing the quarterly estimate by three. Where quarterly survey data are not available, freight debits are derived directly from imports data for the reference month as a difference between total merchandise cost, insurance and freight (CIFE) and free on board (FOB), adjusted to reflect timing and processing adjustments. For freight credits and other transportation credits and debits, estimates are derived by extrapolating the last month's data by an average of movements for the same month over the three previous years.

TOURISM RELATED SERVICES

15 The tourism related services memorandum items provide timely indicators of the movements in tourism related activities, not an absolute measure of the level of these activities. These series are not compiled on a balance of payments conceptual basis. However, they do provide a reasonable approximation of world tourism related activities.

16 The memorandum items have been derived by re-aggregating relevant components of the international trade in services series of the balance of payments accounts. The tourism related indicator has been derived by combining total travel services (business, education-related and other personal travel), passenger fares, and the air transport component of other transportation services which relates to agency fees and commission receipts.

SERVICES BY STATE AND BY PARTNER COUNTRY

17 Annual services data by state and by partner country are released twice yearly. Calendar year data are usually released with the March issue of this publication and financial year data are released with the September issue. Refer to Time Series Data for details.

18 Services credits are classified by the state of provision, while services debits are classified by the state of consumption. The state allocations for transportation, travel and communication services are based on a number of indicators including merchandise trade statistics by state, overseas passenger arrivals and departures by state of clearance

EXPLANATORY NOTES *continued*

SERVICES BY STATE AND BY PARTNER COUNTRY *continued*

and data provided by the Department of Education, Science and Training. The allocation for other services (about 25% of all trade in services) is primarily based on the location of the business reporting the information, which serves as a proxy for the state of provision/consumption of that service. The data should be used with care but are considered suitable for analysis over time.

19 A comprehensive explanation of the data sources used and the methodology applied in the compilation of partner country statistics is provided in Chapter 17 of *Balance of Payments and International Investment Position, Australia - Concepts, Sources and Methods* (cat. no. 5331.0). Approximately 7% of total services credits and 5% of total services debits for 2005–06 are either confidential, or unable to be allocated to individual countries.

ABS DATA AVAILABLE

20 More detailed balance of payments and recorded merchandise trade data, including forward seasons factors are available as time series spreadsheets or data cubes from the ABS website.

21 More detailed merchandise trade data by commodity, country and state, and statistics included in this and related publications are available on request. Inquiries should be made to the National Information and Referral Service as shown on the back of this publication.

RELATED PRODUCTS AND PUBLICATIONS

22 Users may also wish to refer to the following publications which can be downloaded free of charge from the ABS web site:

- *Balance of Payments and International Investment Position, Australia* (cat. no. 5302.0) – issued quarterly
- *International Merchandise Imports, Australia* (cat. no. 5439.0) – issued monthly
- *International Trade Price Indexes, Australia* (cat. no. 6457.0) – issued quarterly
- *Balance of Payments and International Investment Position, Australia: Concepts, Sources and Methods* (cat. no. 5331.0)
- *Information Paper: Quality of Australian Balance of Payments Statistics* (cat. no. 5342.0)
- *International Merchandise Trade, Australia: Concepts, Sources and Methods* (cat. no. 5489.0)
- *A Guide to Australian Balance of Payments and International Investment Position Statistics* (cat. no. 5362.0.55.001).

23 Current publications produced by the ABS are listed in the Catalogue of Publications and Products (cat. no. 1101.0). The Catalogue is available from any ABS office or from this site. The ABS also issues a daily Release Advice on the web site which details products to be released in the week ahead.

CAUTIONARY NOTE

24 The tables in this publication are presented on two bases. Tables 1–11 contain estimates of Australia's international trade in goods and services which have been adjusted for coverage, valuation and timing to a balance of payments basis. Tables 12–15 contain estimates of merchandise exports and imports based on Australian Customs Service records. Paragraph 5 of the Explanatory Notes provides an explanation of the difference between these bases.

ROUNDING

25 Where figures have been rounded, discrepancies may occur between sums of the component items and totals. All percentage movements are calculated from data at the level of precision presented in this publication (i.e. \$m).

EXPLANATORY NOTES *continued*

ABBREVIATIONS

| | |
|--------|--|
| \$b | billion (thousand million) dollars |
| \$m | million dollars |
| ABS | Australian Bureau of Statistics |
| APEC | Asia Pacific Economic Co-operation |
| ASEAN | Association of South-East Asian Nations |
| n.e.s. | not elsewhere specified |
| n.i.e. | not included elsewhere |
| OECD | Organisation for Economic Co-operation and Development |
| SAR | Special Administrative Region |
| SITC | Standard International Trade Classification |

APPENDIX RELATED ARTICLES

| <i>Article</i> | <i>Source(a)</i> | <i>Issue</i> |
|---|------------------|--------------|
| Investment | | |
| Foreign ownership of equity | 5302.0 | Sep qtr 2006 |
| Kangaroo bonds | 5302.0 | Sep qtr 2004 |
| Gross external debt | 5302.0 | Sep qtr 2003 |
| Measuring Australia's foreign currency exposure | 5302.0 | Dec qtr 2001 |
| Balance of payments | | |
| International comparison of balance of payments statistics | (b) 5363.0 | 1999–2000 |
| The Sydney Olympic Games Update | 5368.0 | Jul 2000 |
| The Sydney Olympic Games | 5302.0 | Sep qtr 1999 |
| Merchandise trade | | |
| Number and characteristics of Australian exporters | 5368.0.55.006 | 2005–2006 |
| New methodology for deriving counts of Australian exports | 5368.0 | Feb 2006 |
| Export and Import Invoice Currencies, 2005 | 5368.0 | Jun 2005 |
| Australia's Importers, 2003–04 | 5368.0 | Nov 2004 |
| Australia's Exporters, 2003–04 | 5368.0 | Oct 2004 |
| Australia's Trade with the USA | 5368.0 | Mar 2004 |
| Trade through Australia's ports | 5422.0 | Sep qtr 2002 |
| Australia's trade in wine | 5422.0 | Dec qtr 2001 |
| Australia's export markets, 1991–92 to 2000–01 | 5422.0 | Jun qtr 2001 |
| Major commodities traded by Australia, 1991 to 2000 | (b) 5422.0 | Dec qtr 2000 |
| Australia's trade in crude petroleum | 5422.0 | Mar qtr 2000 |
| Australia's merchandise trade with the Republic of Korea | 5422.0 | Sep qtr 1999 |
| Australia's merchandise trade with Japan | 5422.0 | Mar qtr 1999 |
| Bilateral merchandise trade statistics reconciliation: Australia and the European Union, 1992 to 1997 | 5422.0 | Sep qtr 1998 |
| Trade in services | | |
| International trade in services by partner country, 2006, preliminary | 5368.0 | Dec 2006 |
| Changes to International Trade in Services Statistics, August 2006 | 5368.0 | Aug 2006 |
| Changes to International trade in services travel statistics | 5368.0 | Aug 2005 |
| International trade in education services | 5302.0 | Sep 2001 |
| Finance | | |
| Impact of 2003–2004 farm season on Australian production | 1350.0 | Oct 2003 |
| Recent trends in construction and first home buyers finance | 5609.0 | Mar 2002 |
| Household sector data in the financial accounts | 5232.0 | Mar qtr 2002 |
| Investment Managers | 5655.0 | Jun qtr 2000 |
| Venture capital, 1999–2000 | 5611.0 | 2000–01 |
| Technical information | | |
| Changes on 1 January 2007 to Statistical Codes in the AHECC and the Customs Tariff | 1233.0.55.001 | Nov 2006 |
| ABS implementation in January 2007 of revisions to international trade classifications, 2007 | 5368.0.55.005 | June 2006 |
| Revised Treatment of Goods for Processing in Merchandise Trade and Balance of Payments Statistics | 5368.0 | May 2006 |
| Impact of Customs and ABS changes on import statistics from October 2005 | 5439.0 | Oct 2005 |
| ABS Management of the Impact of the Implementation of the Imports Component of the New Customs System | 5439.0 | Aug 2005 |
| Changes to country and port classifications | 5368.0 | May 2003 |
| Implementation of New Customs Systems | 5368.0 | Aug 2004 |
| The effect of customs changes on export statistics | 5422.0 | Jun qtr 2002 |
| Harmonized system changes | 5422.0 | Sep qtr 2001 |
| International trade review: data quality and client queries | 5422.0 | Jun qtr 2000 |
| Data confidentiality | 5422.0 | Dec qtr 1999 |

(a) In the ABS web site home page, select Key Products; Papers & Articles; ABS Articles; Feature Articles by Catalogue Number.

(b) This article can be found in pdf format by referring to the Details page of the specified issue of this publication on the ABS web site and click on Download Now.

FOR MORE INFORMATION . . .

| | |
|-----------------|--|
| <i>INTERNET</i> | www.abs.gov.au the ABS web site is the best place for data from our publications and information about the ABS. |
| <i>LIBRARY</i> | A range of ABS publications are available from public and tertiary libraries Australia wide. Contact your nearest library to determine whether it has the ABS statistics you require, or visit our web site for a list of libraries. |

INFORMATION AND REFERRAL SERVICE

Our consultants can help you access the full range of information published by the ABS that is available free of charge from our web site, or purchase a hard copy publication. Information tailored to your needs can also be requested as a 'user pays' service. Specialists are on hand to help you with analytical or methodological advice.

| | |
|--------------|--|
| <i>PHONE</i> | 1300 135 070 |
| <i>EMAIL</i> | client.services@abs.gov.au |
| <i>FAX</i> | 1300 135 211 |
| <i>POST</i> | Client Services, ABS, GPO Box 796, Sydney NSW 2001 |

FREE ACCESS TO STATISTICS

All statistics on the ABS web site can be downloaded free of charge.

| | |
|--------------------|-----------------------|
| <i>WEB ADDRESS</i> | www.abs.gov.au |
|--------------------|-----------------------|



2536800001070

ISSN 1328 2778

RRP \$26.00